

STATION AVENUE LOFTS

501-503 STATION AVENUE // HADDON HEIGHTS NJ

GNOME ARCHITECTS

04.17.2023

501 Station Ave

Tax ID: 18-00025-00016

Lot: 16

Block: 25

503 Station Ave

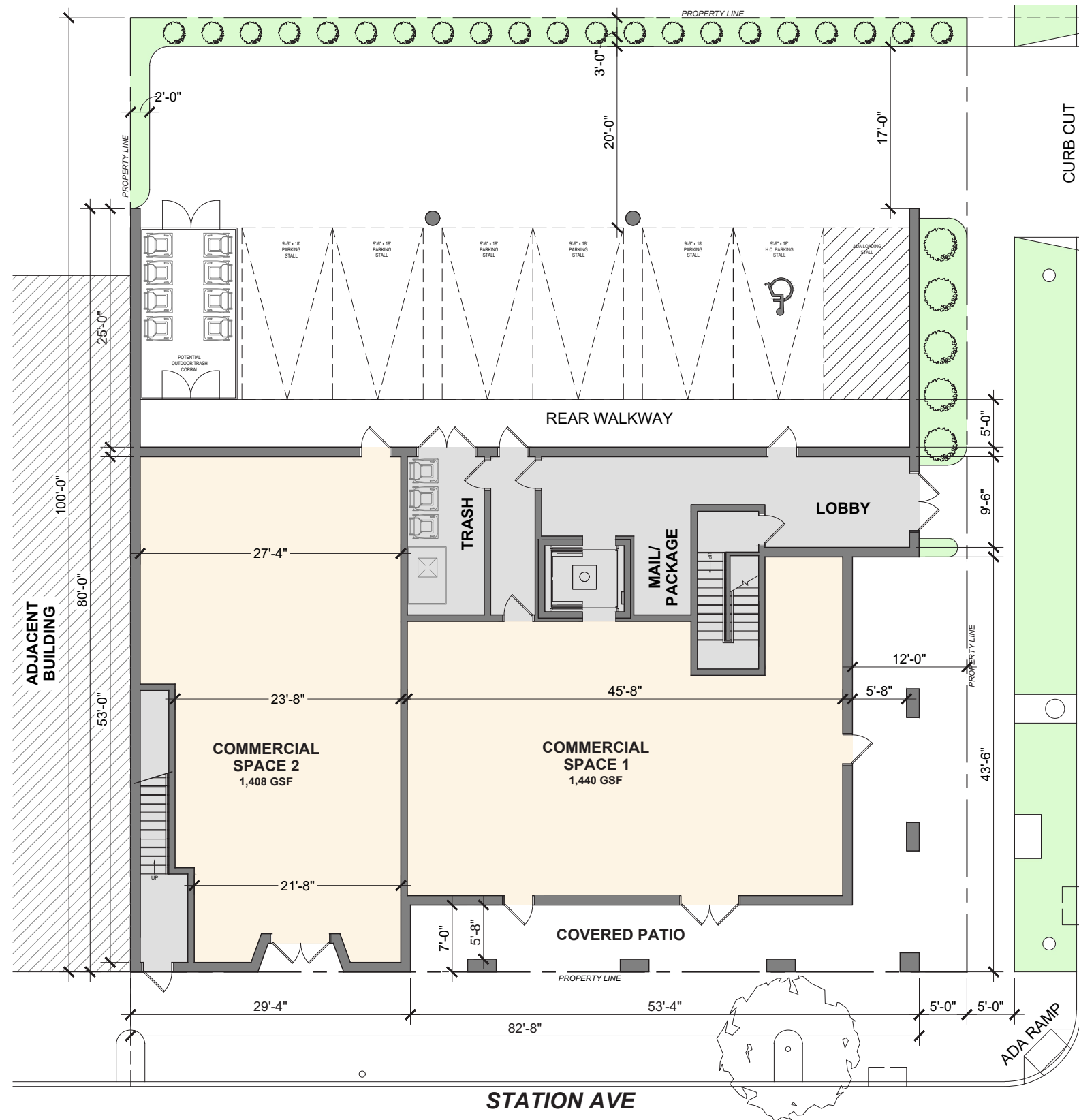
Tax ID: 18-00025-00017 01

Lot: 17 01

Block: 25

 GNOME





BUILDING INFORMATION	
TOTAL BUILDING AREAS	
FIRST FLOOR	3,894 GSF
SECOND FLOOR	6,480 GSF
THIRD FLOOR	6,480 GSF
BUILDING TOTAL	16,854 GSF
GENERAL	
BUILDING HEIGHT (T.O. ROOF)	35'-0"
LOT AREA	8,766 GSF
BUILDING COVERAGE	6,612 SF (75%)
SITE GREEN AREA + GREEN ROOF	432 SF+2344 SF =2776 SF (31%)

FIRST FLOOR SITE PLAN

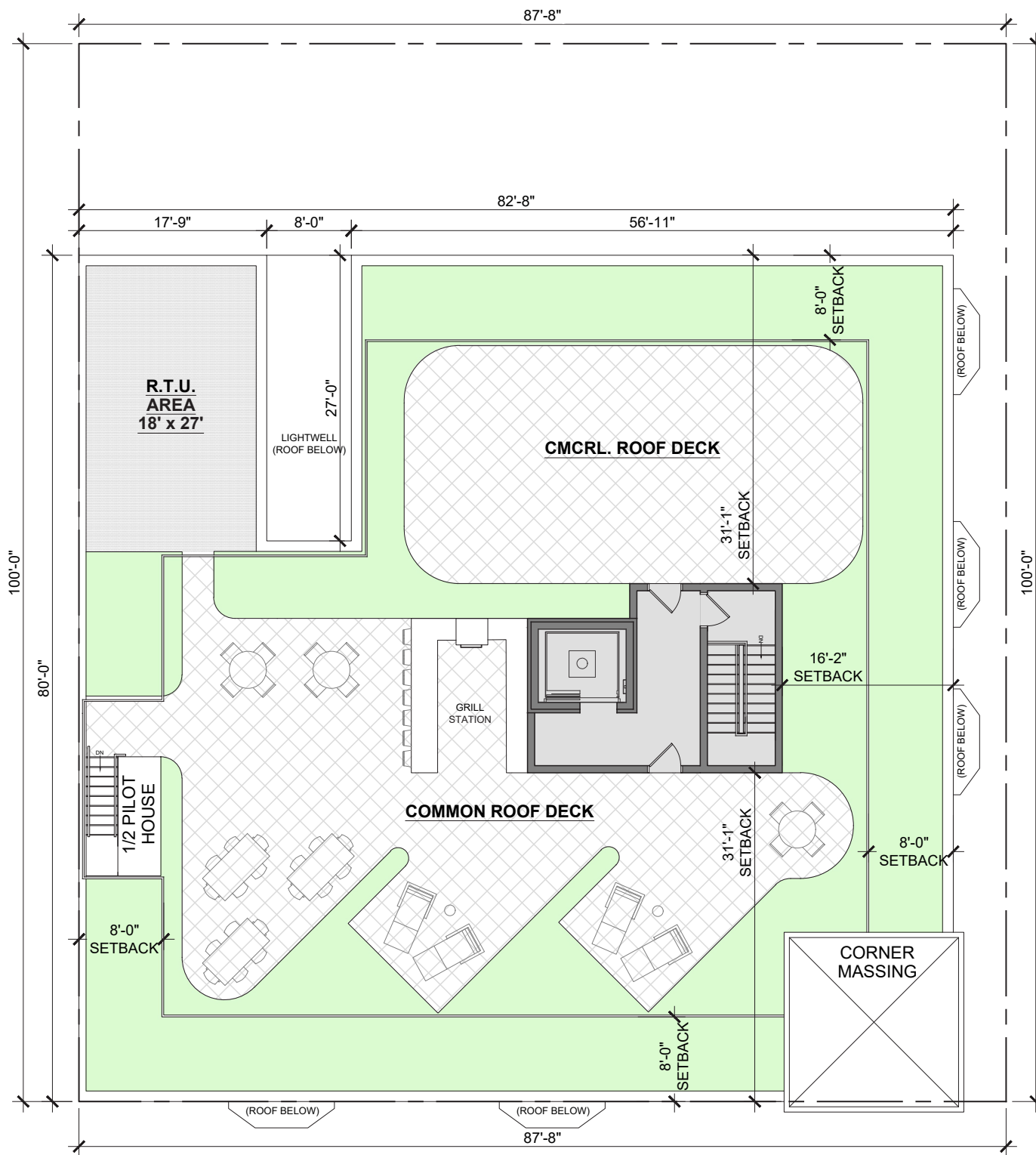




BUILDING INFORMATION	
TOTAL BUILDING AREAS	
FIRST FLOOR	3,894 GSF
SECOND FLOOR	6,480 GSF
THIRD FLOOR	6,480 GSF
BUILDING TOTAL	16,854 GSF
GENERAL	
BUILDING HEIGHT (T.O. ROOF)	35'-0"
LOT AREA	8,766 GSF
BUILDING COVERAGE	6,612 SF (75%)
SITE GREEN AREA + GREEN ROOF	432 SF+2344 SF =2776 SF (31%)

SECOND & THIRD FLOOR PLAN

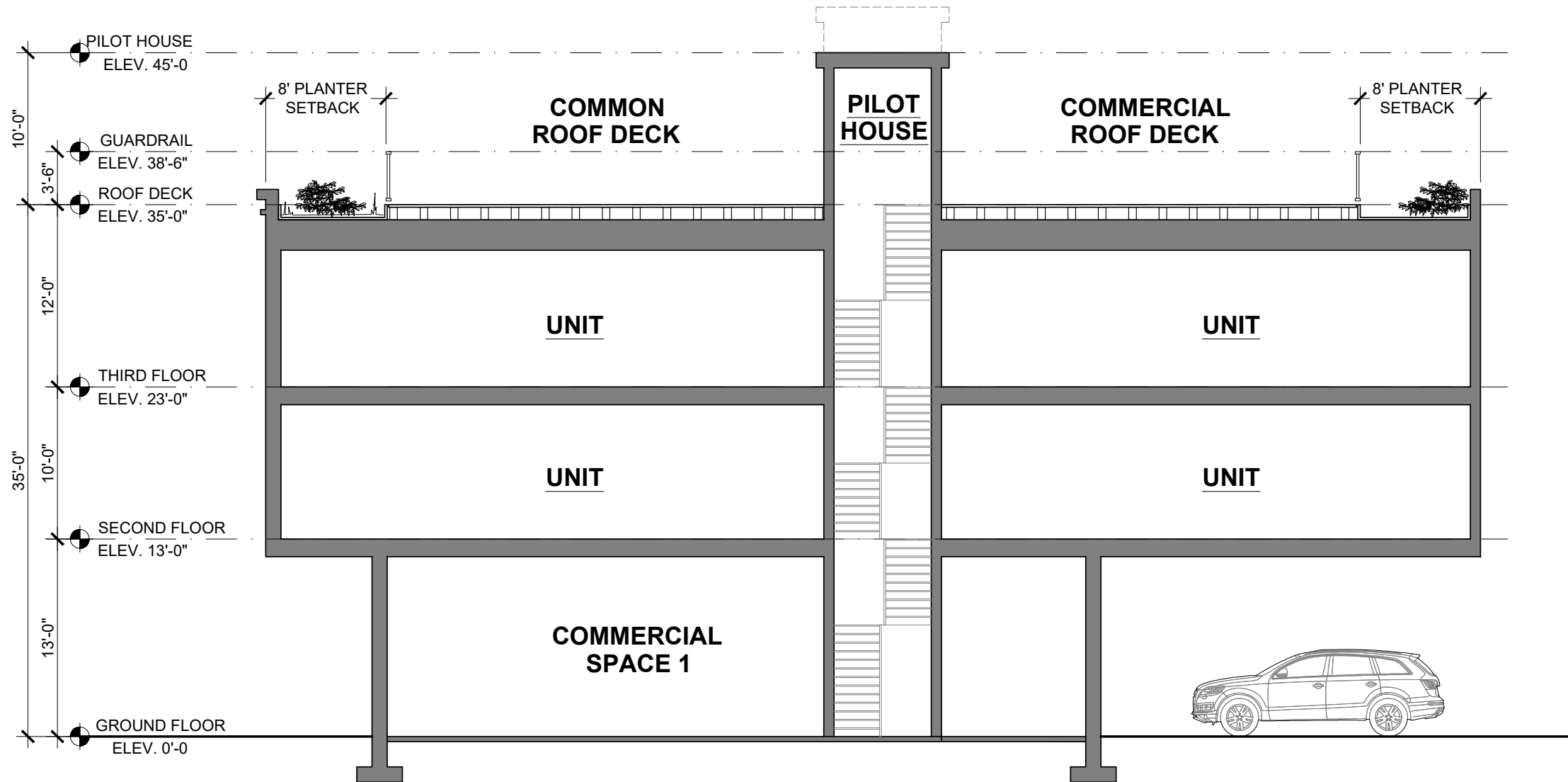




BUILDING INFORMATION	
TOTAL BUILDING AREAS	
FIRST FLOOR	3,894 GSF
SECOND FLOOR	6,480 GSF
THIRD FLOOR	6,480 GSF
BUILDING TOTAL	16,854 GSF
GENERAL	
BUILDING HEIGHT (T.O. ROOF)	35'-0"
LOT AREA	8,766 GSF
BUILDING COVERAGE	6,612 SF (75%)
SITE GREEN AREA + GREEN ROOF	432 SF+2344 SF =2776 SF (31%)

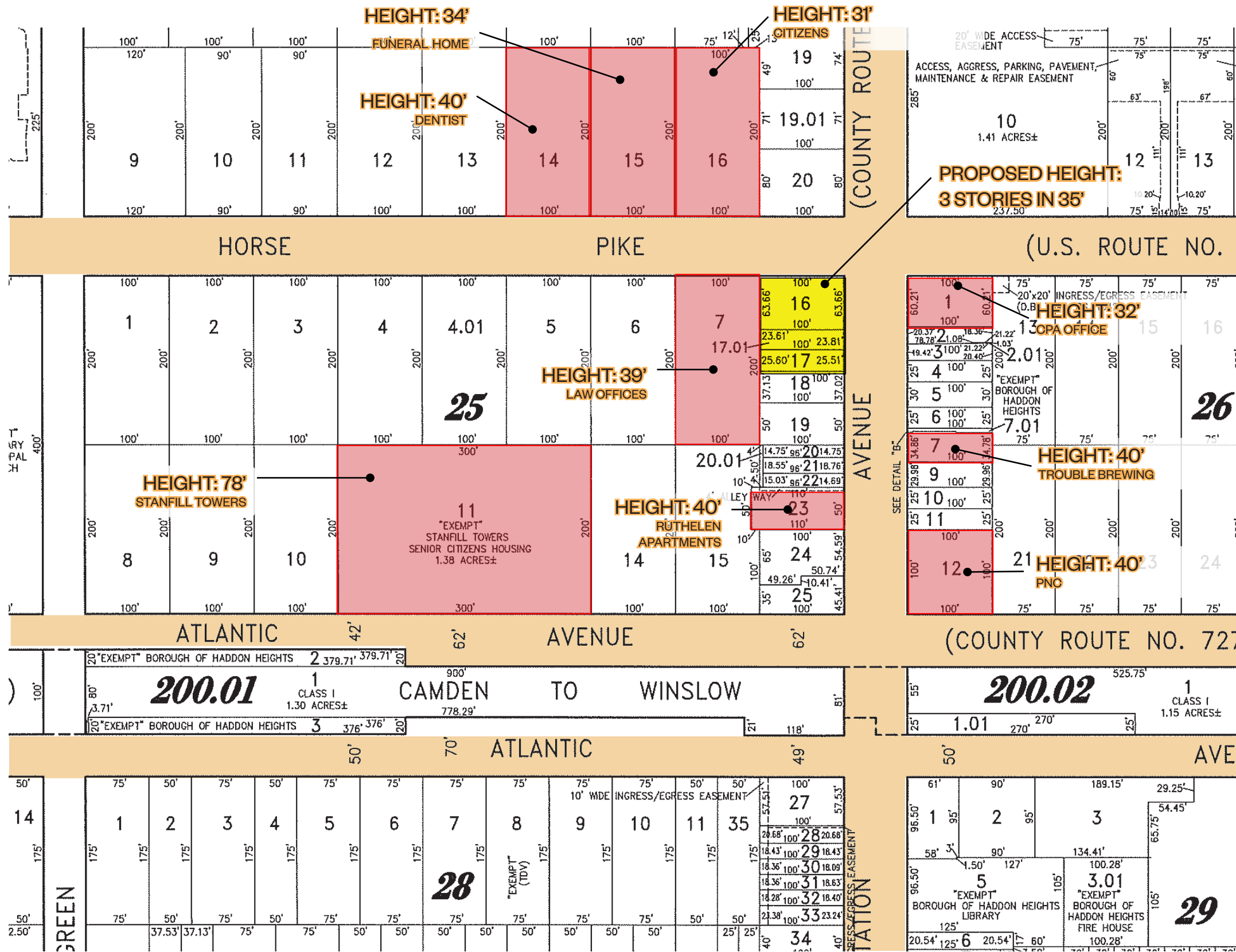
ROOF DECK PLAN





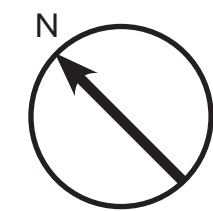
DIAGRAMMATIC SEC-





MAP KEY

-  PROJECT SITE
-  BUILDINGS 3 STORIES + OR 30'+
-  ARTERIAL ROAD







504 STATION AVE

- PROJECTED BAY CLAD IN PANEL PRODUCT
- CONTRASTING TRIM & WINDOWS
- RED BRICK FIELD MATERIAL
- DOUBLE HUNG DIVIDED LITE WINDOWS



200 WHITE HORSE PIKE

- MULTI STORY PROJECTED BAY
- INTEGRAL BAY & CORNICE CONNECTION
- ACCENT COLOR TRIM
- DOUBLE HUNG DIVIDED LITE WINDOWS



519 STATION AVE

- RED BRICK FIELD MATERIAL
- RECESSED COMMERCIAL ENTRY
- PARTIAL HEIGHT BRICK BASE
- PEDESTRIAN LEVEL CORNICE LINE
- VERTICAL PICKET GUARDRAIL ALONG ROOF
- CORNICE BRACKETS



508 STATION AVE

- NAVY ACCENT & RED BRICK FIELD
- ACCENT COLOR TRIM
- PEDESTRIAN LEVEL CORNICE LINE



613 STATION AVE

- PROJECTED BAY CLAD IN PANEL PRODUCT
- DENTAL BANDS AT BAY PROJECTION
- CONTRASTING TRIM ACCENTS
- RED BRICK FIELD MATERIAL
- DOUBLE HUNG WINDOWS ABOVE



625 STATION AVE

- ENTRY COLONNADE
- RED BRICK FIELD MATERIAL



603 STATION AVE

- RECESSED ENTRY W/ PROJECTED OVERHANG
- INTEGRAL BAY & CORNICE CONNECTION
- PEDESTRIAN LEVEL CORNICE LINE
- CONTRASTING TRIM ACCENTS & DETAILING



528 STATION AVE

- VERTICAL PICKET GUARDRAIL ALONG ROOF
- ARCHED WINDOW
- RED BRICK FIELD MATERIAL
- CAST STONE SIDEWALK BANDING









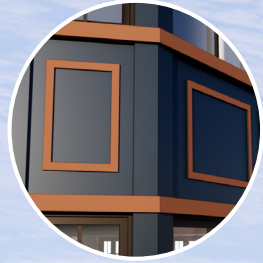








BLACK WINDOWS WITH SIMULATED DIVIDED LITES



ACCENTED POLY-ASH TRIM BAY PROJECTION



BACK LIT BRASS SIGNAGE LETTERING



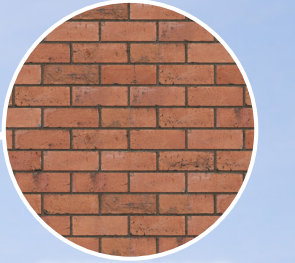
ARCHITECTURAL TRIM PROFILES



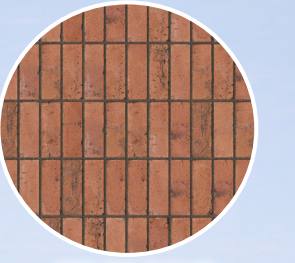
BRASS UP/DOWN LIGHT FIXTURES



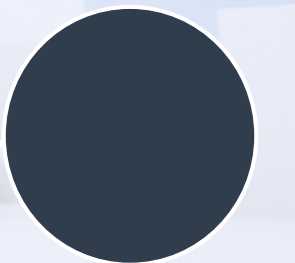
PAINTED POLY-ASH CORNICE & BRACKETS



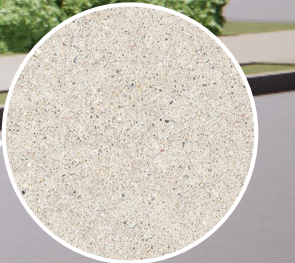
RUNNING BOND FACE BRICK



STACK BOND BRICK BANDING



PAINTED POLY-ASH PANEL CLADDING



CAST STONE BASE BAND





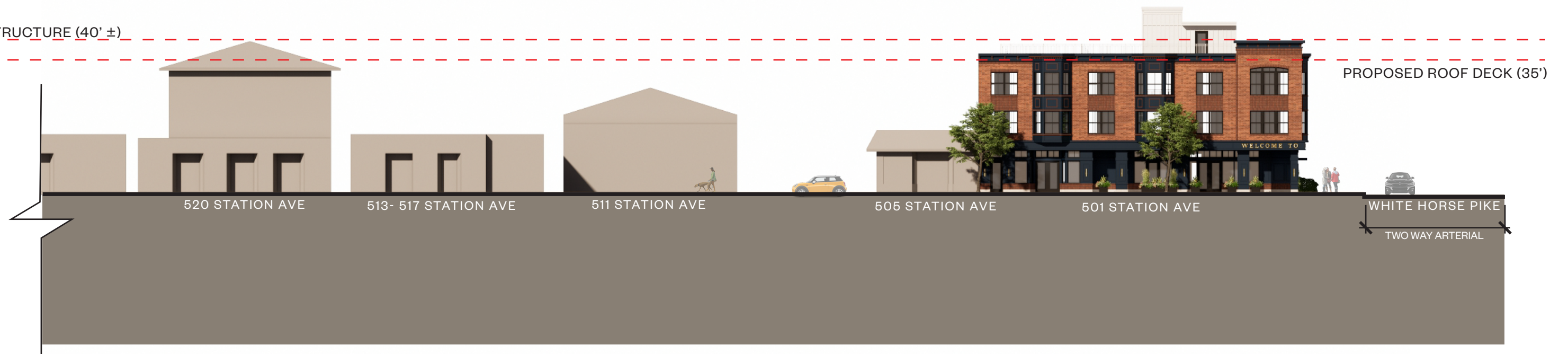
PROPOSED BUILDING IN CONTEXT (CONCEPTUAL MURAL ON PARTY WALL)



PROPOSED MASSING COMPARISON IN CONTEXT (ALONG WHITE HORSE PIKE)



ADJ. STRUCTURE (40' ±)



PROPOSED MASSING COMPARISON IN CONTEXT (ALONG STATION AVE)