

↔ TAX ↔

OFFICE COPY

↔ ASSESSMENT MAP ↔

OF THE

BOROUGH

OF

HADDON HEIGHTS

IN THE

COUNTY OF CAMDEN

NEW JERSEY



REMINGTON & VERNICK ENGINEERS

232 KINGS HIGHWAY EAST, HADDONFIELD, NJ 08033
(856) 795-9595, FAX (856) 795-1882, WEB SITE ADDRESS: WWW.RVE.COM
Certificate of Authorization: 24 GA 28003300

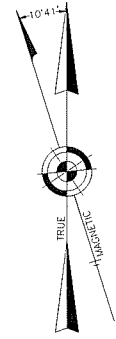
~ENGINEERING EXCELLENCE~



2022

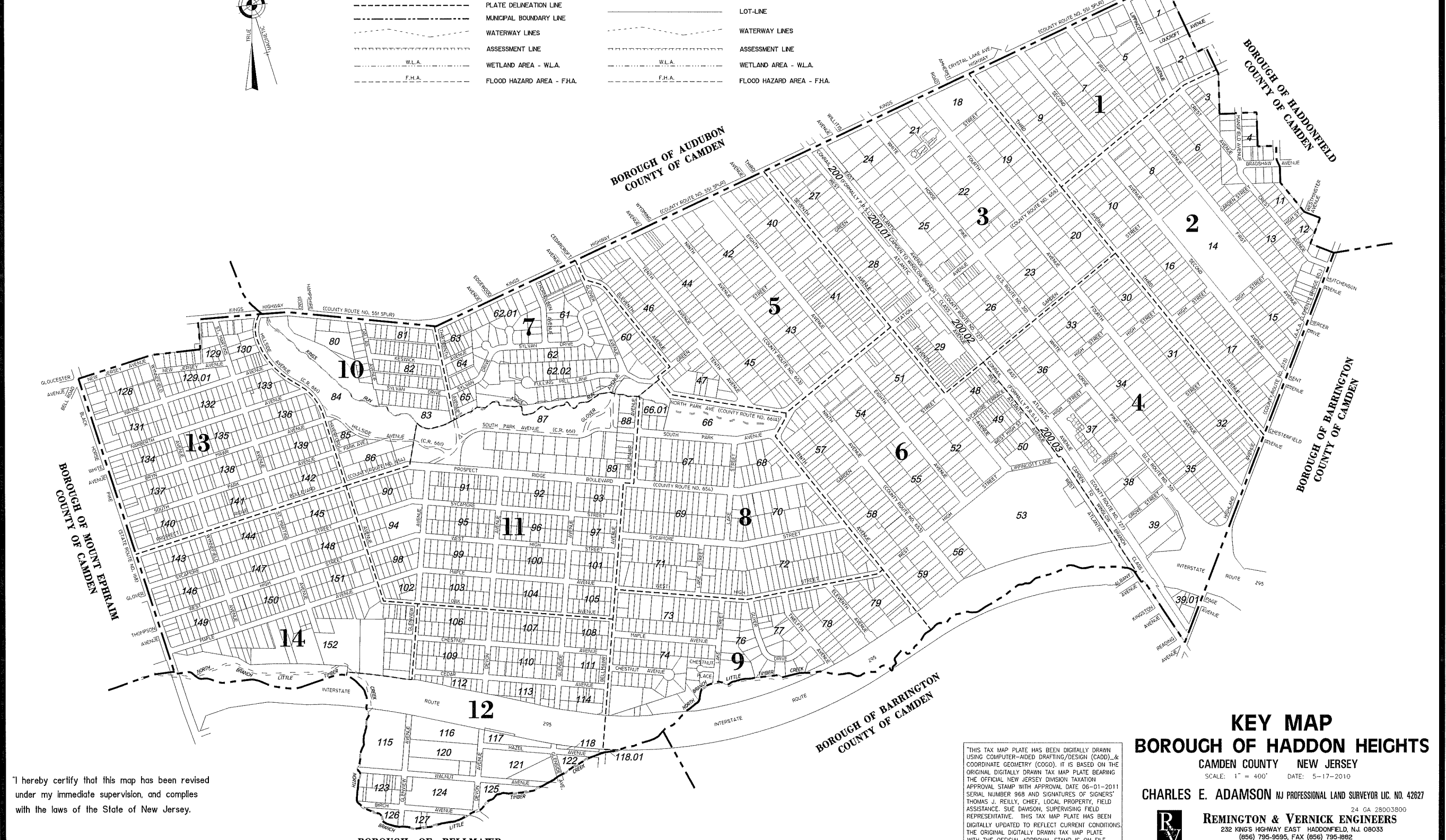
KEY MAP

REVISIONS		
5-4-2011	CHARLES E. ADAMSON	42627
10-3-2011	CHARLES E. ADAMSON	42627
12-31-2011	CHARLES E. ADAMSON	42627
12-31-2013	CHARLES E. ADAMSON	42627
12-31-2014	CHARLES E. ADAMSON	42627
12-31-2015	CHARLES E. ADAMSON	42627
12-31-2017	CHARLES E. ADAMSON	42627
12-31-2018	CHARLES E. ADAMSON	42627
12-31-2019	CHARLES E. ADAMSON	42627
12-28-2020	CHARLES E. ADAMSON	42627
12-21-2021	CHARLES E. ADAMSON	42627



KEY MAP		LEGEND		DETAIL SHEET	
10	PLATE NUMBER	110	NEW BLOCK NUMBERS	5	NEW LOT NUMBERS
110	BLOCK NUMBER	ARTIFICIAL-BLOCK-LIMIT-LINE	ARTIFICIAL-BLOCK-LIMIT-LINE	LOT-LINE	LOT-LINE
-----	ARTIFICIAL-BLOCK-LIMIT-LINE	-----	ARTIFICIAL-BLOCK-LIMIT-LINE	-----	LOT-LINE
-----	PLATE DELINEATION LINE	-----	LOT-LINE	-----	WATERWAY LINES
-----	MUNICIPAL BOUNDARY LINE	-----	WATERWAY LINES	-----	ASSESSMENT LINE
-----	WATERWAY LINES	-----	ASSESSMENT LINE	-----	WETLAND AREA - W.L.A.
-----	ASSESSMENT LINE	-----	WETLAND AREA - W.L.A.	-----	FLOOD HAZARD AREA - F.H.A.
-----	W.L.A.	-----	FLOOD HAZARD AREA - F.H.A.	-----	
-----	F.H.A.	-----		-----	

NOTES: 1. THE AREAS, BOUNDARIES AND DIMENSIONS, SHOWN ON THIS TAX MAP, ARE DERIVED FROM GROUND SURVEYS, AERIAL SURVEYS, AND RECORDED PLANS, MAPS, DEEDS AND WILLS, ARE TO BE USED FOR ASSESSMENT PURPOSES ONLY.
 2. THIS TAX MAP SUPERSEDES THE TAX MAP APPROVED DATE 11-27-1950.
 3. THESE MAPS HAVE BEEN DRAWN USING COMPUTER AIDED DRAFTING/DESIGN (CAD/D) AND COORDINATE GEOMETRY (COGO).



"I hereby certify that this map has been revised under my immediate supervision, and complies with the laws of the State of New Jersey.

CHARLES E. ADAMSON LAND SURVEYOR LIC. NO. 42627

"THIS TAX MAP PLATE HAS BEEN DIGITALLY DRAWN USING COMPUTER-AIDED DRAFTING/DESIGN (CAD/D) & COORDINATE GEOMETRY (COGO). IT IS BASED ON THE ORIGINAL DIGITALLY DRAWN TAX MAP PLATE BEARING THE OFFICIAL NEW JERSEY DIVISION TAXATION APPROVAL STAMP WITH APPROVAL DATE 06-01-2011 SERIAL NUMBER 968 AND SIGNATURES OF SIGNERS' THOMAS J. REILLY, CHIEF, LOCAL PROPERTY, FIELD ASSISTANCE; SUE DAVISON, SUPERVISING FIELD REPRESENTATIVE. THIS TAX MAP PLATE HAS BEEN DIGITALLY UPDATED TO REFLECT CURRENT CONDITIONS. THE ORIGINAL DIGITALLY DRAWN TAX MAP PLATE WITH THE OFFICIAL APPROVAL STAMP IS ON FILE WITH REMINGTON & VERNICK ENGINEERS."

KEY MAP BOROUGH OF HADDON HEIGHTS

CAMDEN COUNTY NEW JERSEY
 SCALE: 1" = 400' DATE: 5-17-2010

CHARLES E. ADAMSON NJ PROFESSIONAL LAND SURVEYOR LIC. NO. 42627



24 GA 28003800
REMINGTON & VERNICK ENGINEERS
 232 KING'S HIGHWAY EAST HADDONFIELD, N.J. 08033
 (856) 795-9595, FAX (856) 795-1892
 WEB SITE ADDRESS: WWW.RVE.COM

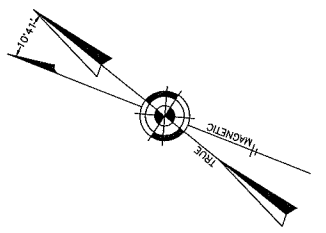
TO SHOW CONDITIONS AS OF 12-21-2021

KEY MAP

REVISIONS		
10-1-2011	CHARLES E. ADAMSON	42627
12-31-2018	CHARLES E. ADAMSON	42627
12-28-2020	CHARLES E. ADAMSON	42627
12-21-2021	CHARLES E. ADAMSON	42627

NOTE:
THIS SHEET HAS BEEN DRAWN USING COMPUTER AIDED DRAFTING/DESIGN (CAD/D) AND COORDINATE GEOMETRY (COGO).

**BOROUGH OF HADDONFIELD
COUNTY OF CAMDEN**



**BOROUGH OF AUDUBON
COUNTY OF CAMDEN**



SHEET 2

SHEET 3

THIS TAX MAP PLATE HAS BEEN DIGITALLY DRAWN USING COMPUTER-AIDED DRAFTING/DESIGN (CAD/D) & COORDINATE GEOMETRY (COGO). IT IS BASED ON THE ORIGINAL DIGITALLY DRAWN TAX MAP PLATE BEARING THE OFFICIAL NEW JERSEY DIVISION TAXATION APPROVAL STAMP WITH APPROVAL DATE 06-01-2011 SERIAL NUMBER 968 AND SIGNATURES OF SIGNERS THOMAS J. RELLY, CHIEF, LOCAL PROPERTY, FIELD ASSISTANCE, SUE DAVISON, SUPERVISING FIELD REPRESENTATIVE. THIS TAX MAP PLATE HAS BEEN DIGITALLY UPDATED TO REFLECT CURRENT CONDITIONS. THE ORIGINAL DIGITALLY DRAWN TAX MAP PLATE WITH THE OFFICIAL APPROVAL STAMP IS ON FILE WITH REMINGTON & VERNICK ENGINEERS.

**TAX MAP
BOROUGH OF HADDON HEIGHTS
CAMDEN COUNTY NEW JERSEY**
SCALE: 1" = 100' 5-17-2010

CHARLES E. ADAMSON NJ PROFESSIONAL LAND SURVEYOR LIC. NO. 42627
24 GA 28003800
REMINGTON & VERNICK ENGINEERS
232 KING'S HIGHWAY EAST HADDONFIELD, NJ 08033
(856) 795-9595, FAX (856) 795-6882
WEB SITE ADDRESS: WWW.RVE.COM
TO SHOW CONDITIONS AS OF 12-21-2021

REVISIONS		
12-31-2015	CHARLES E. ADAMSON	42627
12-31-2018	CHARLES E. ADAMSON	42627
12-31-2019	CHARLES E. ADAMSON	42627

NOTE:

THIS SHEET HAS BEEN DRAWN USING COMPUTER AIDED DRAFTING/DESIGN (CAD/D) AND COORDINATE GEOMETRY (COGO).

BOROUGH OF HADDONFIELD COUNTY OF CAMDEN

THIS TAX MAP PLATE HAS BEEN DIGITALLY DRAWN USING COMPUTER-AIDED DRAFTING/DESIGN (CADD) & COORDINATE GEOMETRY (COGO). IT IS BASED ON THE ORIGINAL DIGITALLY DRAWN TAX MAP PLATE BEARING THE OFFICIAL NEW JERSEY DIVISION TAXATION APPROVAL STAMP WITH APPROVAL DATE 06-01-2011 SERIAL NUMBER 968 AND SIGNATURES OF SIGNERS' THOMAS J. REILLY, CHIEF, LOCAL PROPERTY, FIELD ASSISTANCE; SUE DAVISON, SUPERVISING FIELD REPRESENTATIVE. THIS TAX MAP PLATE HAS BEEN DIGITALLY UPDATED TO REFLECT CURRENT CONDITIONS. THE ORIGINAL DIGITALLY DRAWN TAX MAP PLATE WITH THE OFFICIAL APPROVAL STAMP IS ON FILE WITH REMINGTON & VERNICK ENGINEERS."

TAX MAP BOROUGH OF HADDON HEIGHTS

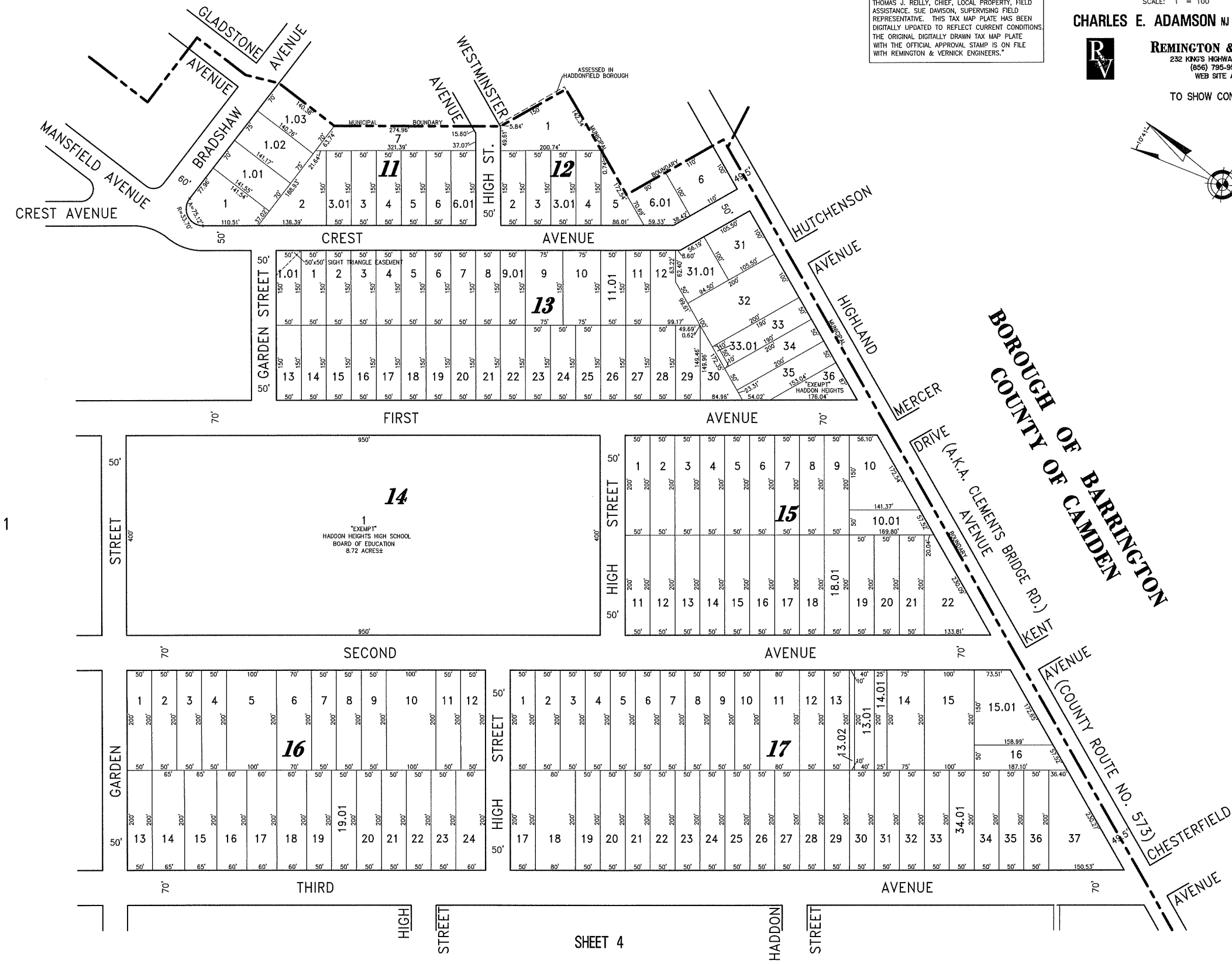
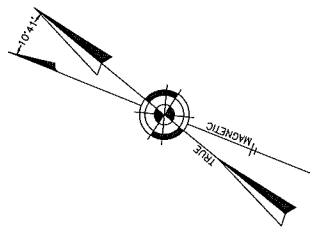
CAMDEN COUNTY NEW JERSEY
SCALE: 1" = 100' DATE: 5-17-2010

CHARLES E. ADAMSON NJ PROFESSIONAL LAND SURVEYOR LIC. NO. 42627



24 GA 28003800
REMINGTON & VERNICK ENGINEERS
232 KING'S HIGHWAY EAST HADDONFIELD, NJ 08033
(856) 795-9595, FAX (856) 795-8882
WEB SITE ADDRESS WWW.RVE.COM

TO SHOW CONDITIONS AS OF 12-21-2021



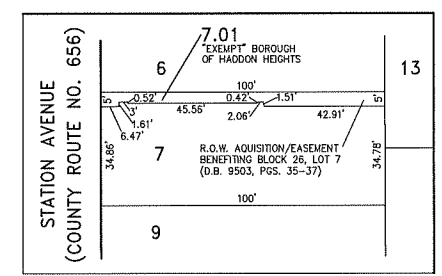
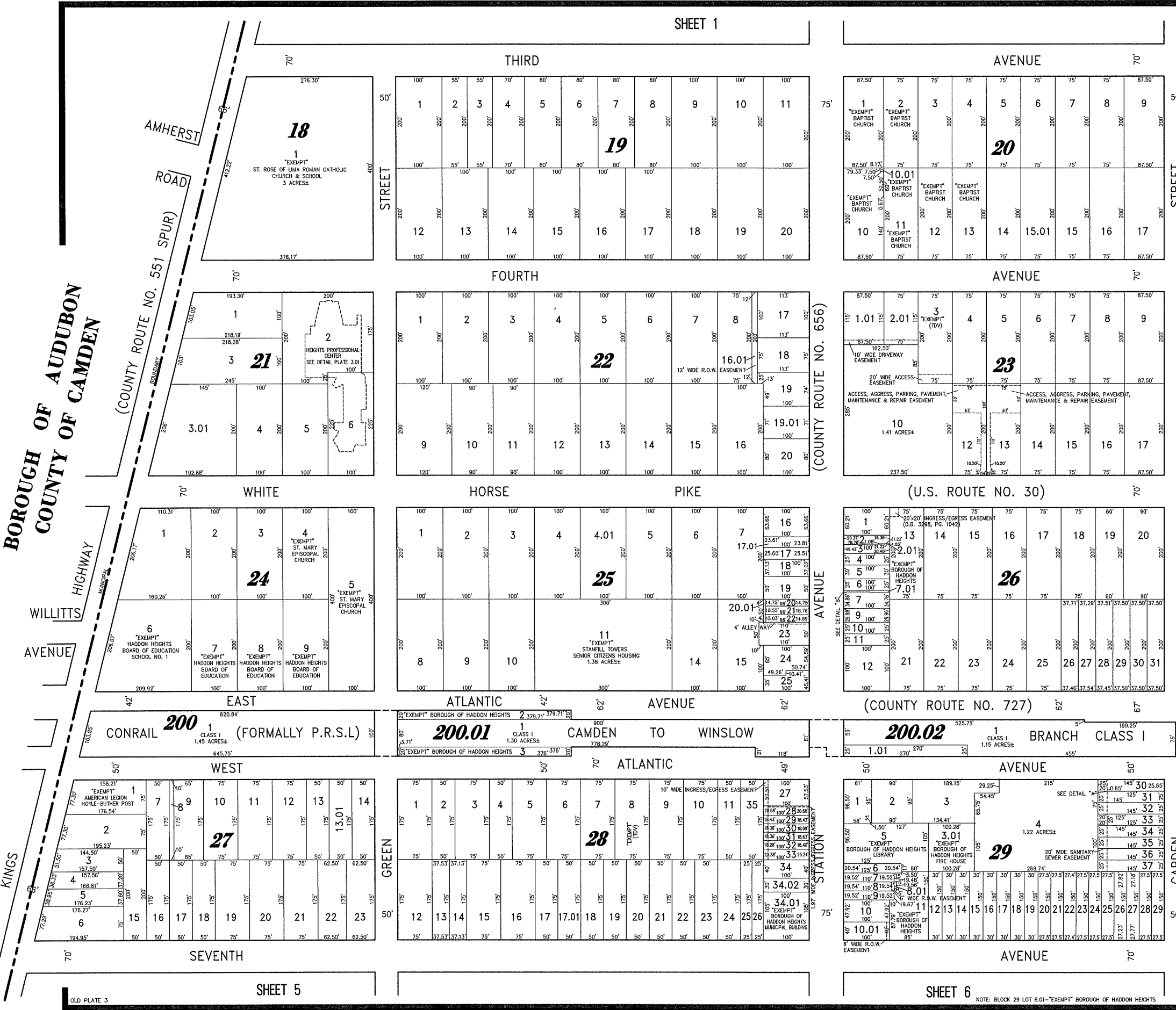
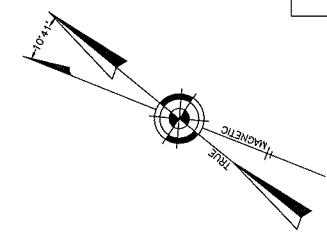
SHEET 1

SHEET 4

SHEET 1

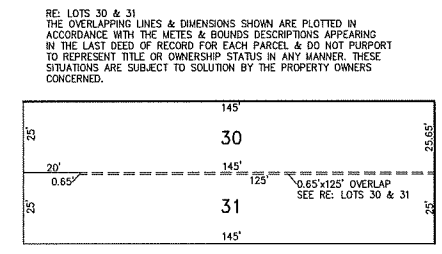
NOTE: THIS SHEET HAS BEEN DRAWN USING COMPUTER AIDED DRAFTING/DESIGN (CAD/D) AND COORDINATE GEOMETRY (COGO).

REVISIONS		
12-31-2013	CHARLES E. ADAMSON	42627
12-31-2015	CHARLES E. ADAMSON	42627
12-31-2016	CHARLES E. ADAMSON	42627
12-31-2016	CHARLES E. ADAMSON	42627
12-31-2019	CHARLES E. ADAMSON	42627



DETAIL "B" SCALE: 1"=30'

SHEET 4



DETAIL "A" SCALE: 1"=30'

"THIS TAX MAP PLATE HAS BEEN DIGITALLY DRAWN USING COMPUTER-AIDED DRAFTING/DESIGN (CAD/D) & COORDINATE GEOMETRY (COGO). IT IS BASED ON THE ORIGINAL DIGITALLY DRAWN TAX MAP PLATE BEARING THE OFFICIAL NEW JERSEY DIVISION TAXATION APPROVAL STAMP WITH APPROVAL DATE 06-01-2011 SERIAL NUMBER 988 AND SIGNATURES OF SIGNERS: THOMAS J. REILLY, CHIEF, LOCAL PROPERTY, FIELD ASSISTANCE, SUE DAVISON, SUPERVISING FIELD REPRESENTATIVE. THIS TAX MAP PLATE HAS BEEN DIGITALLY UPDATED TO REFLECT CURRENT CONDITIONS. THE ORIGINAL DIGITALLY DRAWN TAX MAP PLATE WITH THE OFFICIAL APPROVAL STAMP IS ON FILE WITH REMINGTON & VERNICK ENGINEERS."

TAX MAP

BOROUGH OF HADDON HEIGHTS

CAMDEN COUNTY NEW JERSEY

SCALE: 1" = 100' DATE: 5-17-2010

CHARLES E. ADAMSON NJ PROFESSIONAL LAND SURVEYOR LIC. NO. 42627

REMINGTON & VERNICK ENGINEERS
 24 GA 28003800
 232 KING'S HIGHWAY EAST HADDONFIELD, N.J. 08033
 (856) 795-9595, FAX (856) 795-8882
 WEB SITE ADDRESS WWW.RVE.COM

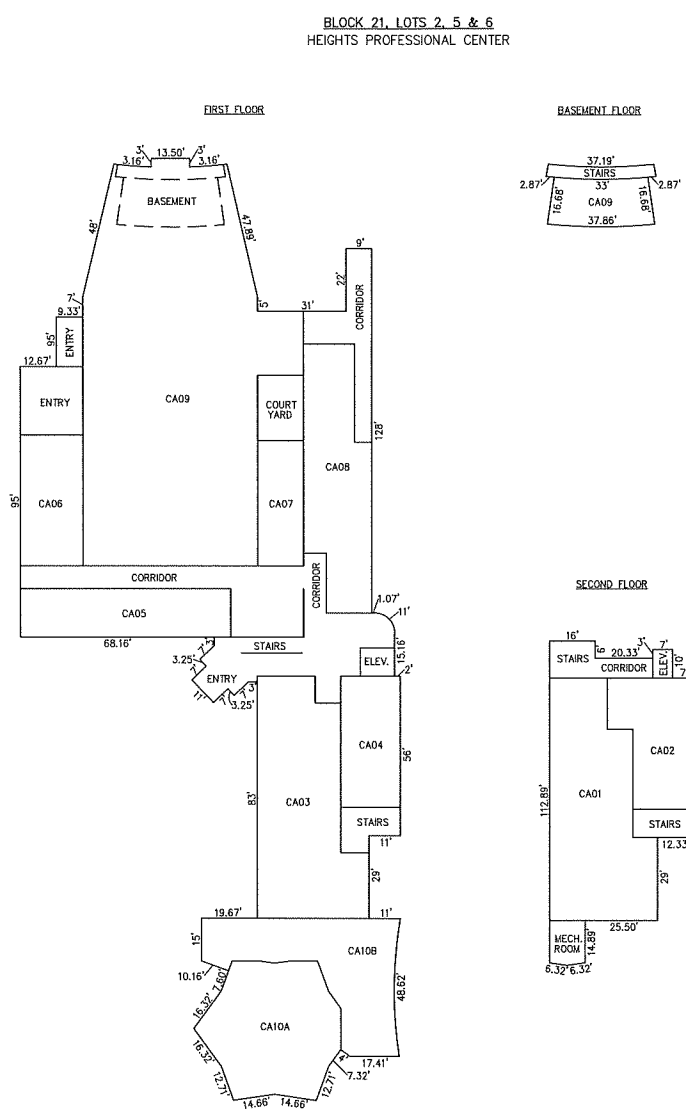
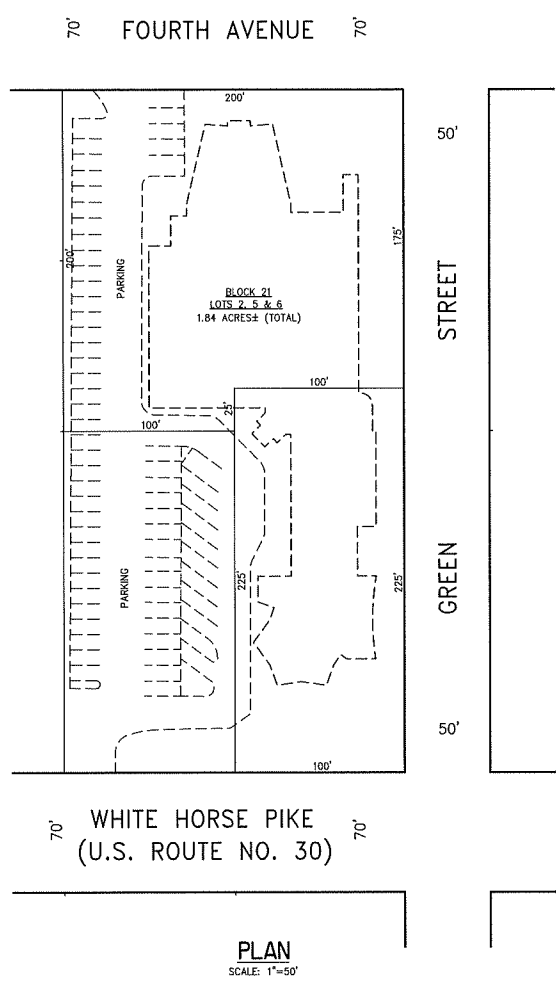
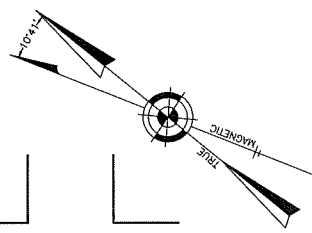
TO SHOW CONDITIONS AS OF 12-21-2021

SHEET 6

NOTE: BLOCK 29 LOT 8.01-"EXEMPT" BOROUGH OF HADDON HEIGHTS

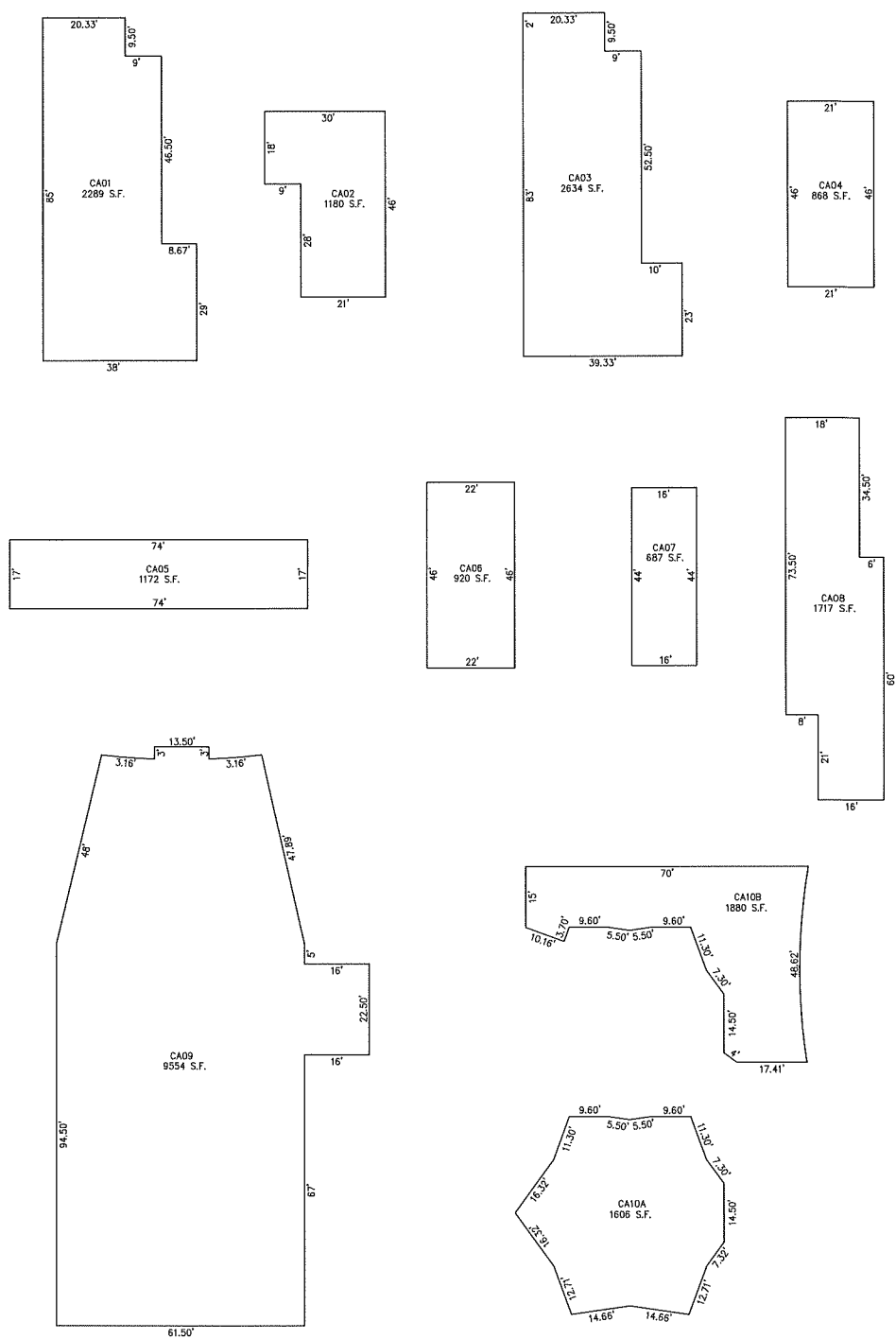
REVISIONS		
2-31-2013	CHARLES E. ADAMSON	42627
2-31-2015	CHARLES E. ADAMSON	42627
2-31-2018	CHARLES E. ADAMSON	42627

NOTE:
THIS SHEET HAS BEEN DRAWN USING COMPUTER AIDED DRAFTING/DESIGN (CAD/D) AND COORDINATE GEOMETRY (COGO).



DETAILS
SCALE: 1"=30'

BLOCK 21, LOTS 2, 5 & 6
HEIGHTS PROFESSIONAL CENTER
17 WHITE HORSE PIKE
SEE PLATES 3, 3.01



DETAILS
SCALE: 1"=20'

THIS TAX MAP PLATE HAS BEEN DIGITALLY DRAWN USING COMPUTER-AIDED DRAFTING/DESIGN (CAD/D) & COORDINATE GEOMETRY (COGO). IT IS BASED ON THE ORIGINAL DIGITALLY DRAWN TAX MAP PLATE BEARING THE OFFICIAL NEW JERSEY DIVISION TAXATION APPROVAL STAMP WITH APPROVAL DATE 06-01-2011 SERIAL NUMBER 968 AND SIGNATURES OF SIGNERS' THOMAS J. REILLY, CHIEF, LOCAL PROPERTY, FIELD ASSISTANCE; SUE DAWSON, SUPERVISING FIELD REPRESENTATIVE. THIS TAX MAP PLATE HAS BEEN DIGITALLY UPDATED TO REFLECT CURRENT CONDITIONS. THE ORIGINAL DIGITALLY DRAWN TAX MAP PLATE WITH THE OFFICIAL APPROVAL STAMP IS ON FILE WITH REMINGTON & VERNICK ENGINEERS.

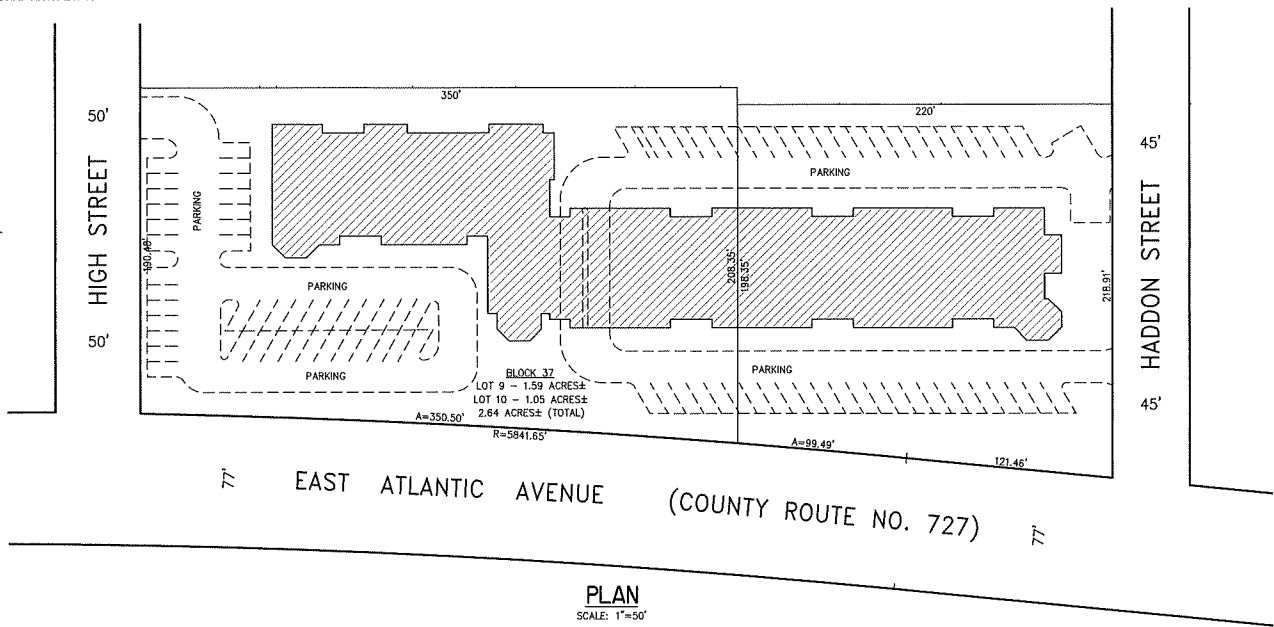
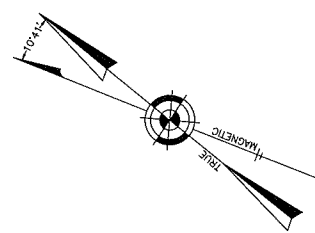
TAX MAP
BOROUGH OF HADDON HEIGHTS
CAMDEN COUNTY NEW JERSEY

SCALE: NOTED DATE: 5-17-2010
CHARLES E. ADAMSON NJ PROFESSIONAL LAND SURVEYOR LIC. NO. 42627
24 GA 28003800
REMINGTON & VERNICK ENGINEERS
232 KING'S HIGHWAY EAST HADDONFIELD, N.J. 08033
(856) 795-9595, FAX (856) 795-1882
WEB SITE ADDRESS: WWW.RVE.COM
TO SHOW CONDITIONS AS OF 12-21-2021



REVISIONS		
12-31-2015	CHARLES E. ADAMSON	42627
12-31-2018	CHARLES E. ADAMSON	42627
12-31-2019	CHARLES E. ADAMSON	42627

NOTE:
THIS SHEET HAS BEEN DRAWN USING COMPUTER AIDED DRAFTING/DESIGN (CAD/D) AND COORDINATE GEOMETRY (COGO).



TAX MAP

BOROUGH OF HADDON HEIGHTS

CAMDEN COUNTY NEW JERSEY
SCALE: NOTED DATE: 5-17-2010

CHARLES E. ADAMSON NJ PROFESSIONAL LAND SURVEYOR LIC. NO. 42627



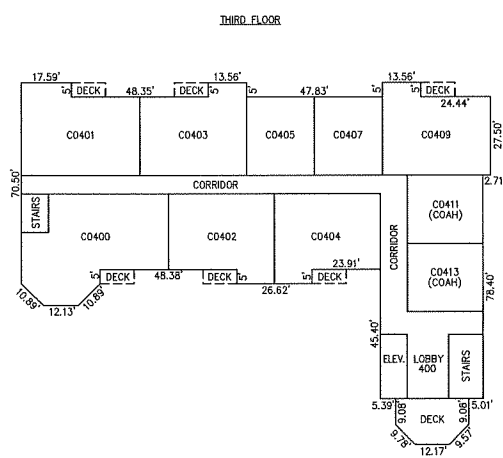
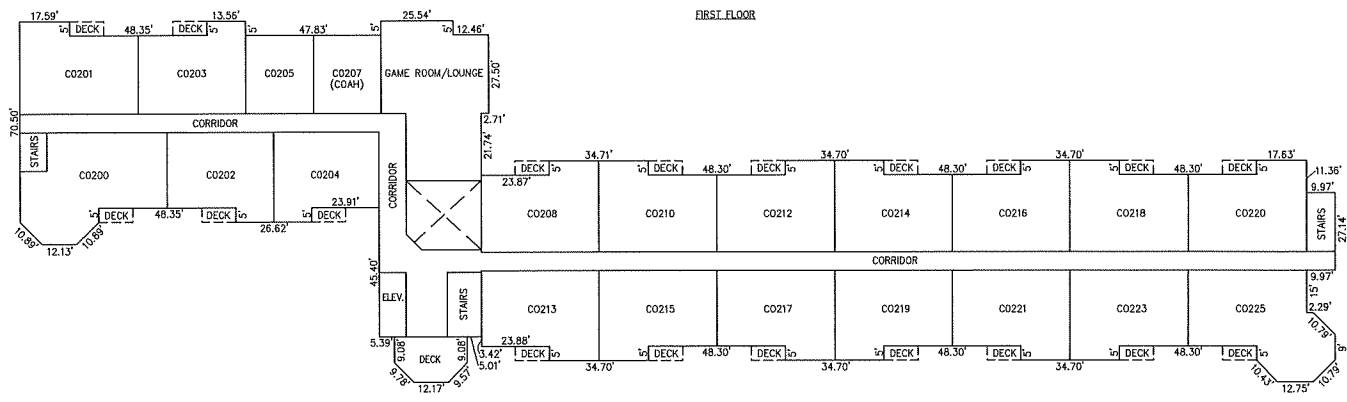
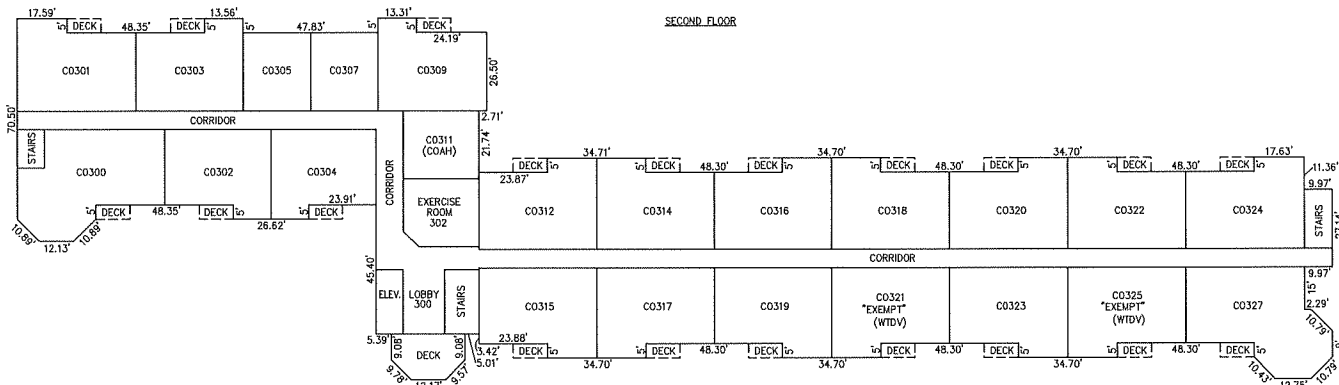
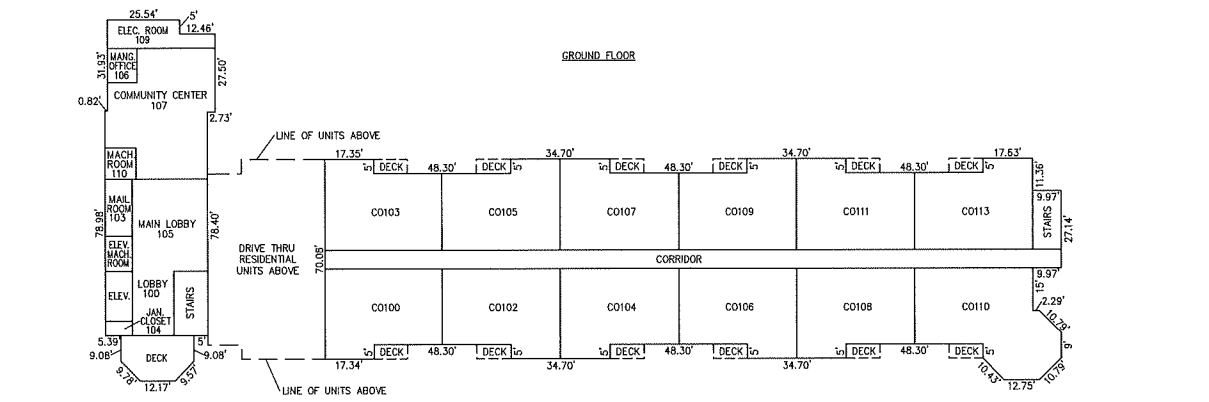
24 GA 28003800
REMINGTON & VERNICK ENGINEERS
232 KING'S HIGHWAY EAST HADDONFIELD, NJ 08033
(856) 795-9595, FAX (856) 795-8882
WEB SITE ADDRESS WWW.RVE.COM

TO SHOW CONDITIONS AS OF 12-21-2021

"THIS TAX MAP PLATE HAS BEEN DIGITALLY DRAWN USING COMPUTER-AIDED DRAFTING/DESIGN (CAD/D) & COORDINATE GEOMETRY (COGO). IT IS BASED ON THE ORIGINAL DIGITALLY DRAWN TAX MAP PLATE BEARING THE OFFICIAL NEW JERSEY DIVISION TAXATION APPROVAL STAMP WITH APPROVAL DATE 06-01-2011 SERIAL NUMBER 968 AND SIGNATURES OF SIGNERS' THOMAS J. REILLY, CHIEF, LOCAL PROPERTY, FIELD ASSISTANCE, SUE DAWSON, SUPERVISING FIELD REPRESENTATIVE. THIS TAX MAP PLATE HAS BEEN DIGITALLY UPDATED TO REFLECT CURRENT CONDITIONS. THE ORIGINAL DIGITALLY DRAWN TAX MAP PLATE WITH THE OFFICIAL APPROVAL STAMP IS ON FILE WITH REMINGTON & VERNICK ENGINEERS."

PLAN
SCALE: 1"=50'

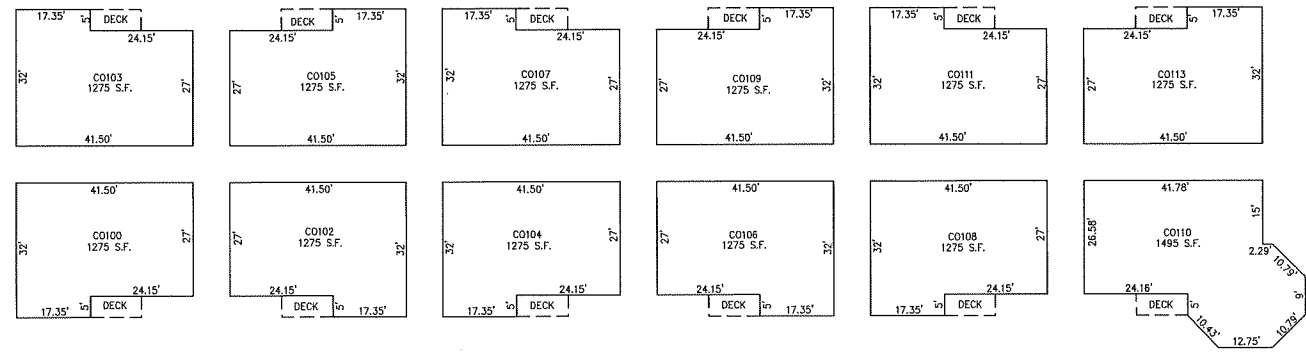
BLOCK 37, LOTS 9 & 10
KING'S RUN AT HADDON HEIGHTS CONDOMINIUM



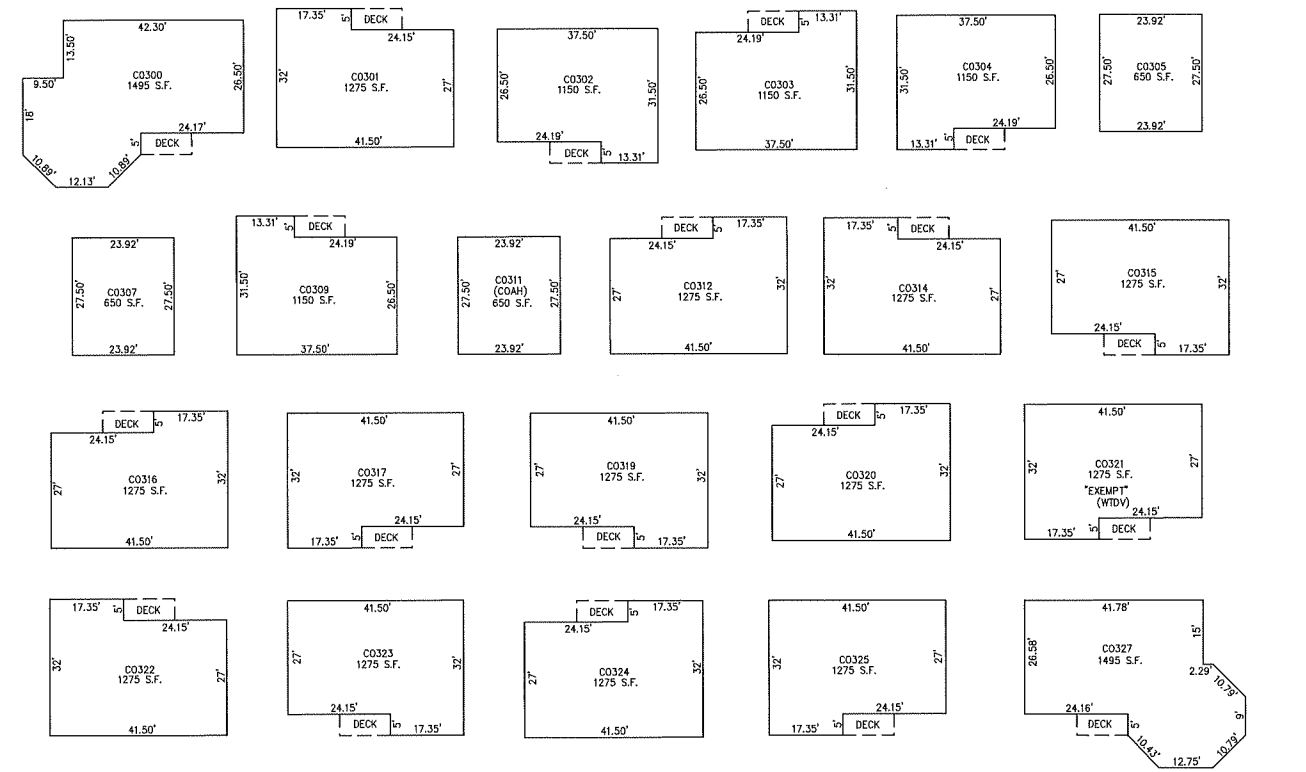
DETAILS
SCALE: 1"=30'

BLOCK 37, LOTS 9 & 10
KING'S RUN AT HADDON HEIGHTS
146 KING'S HIGHWAY
SEE PLATES 4, 4.01 & 4.02

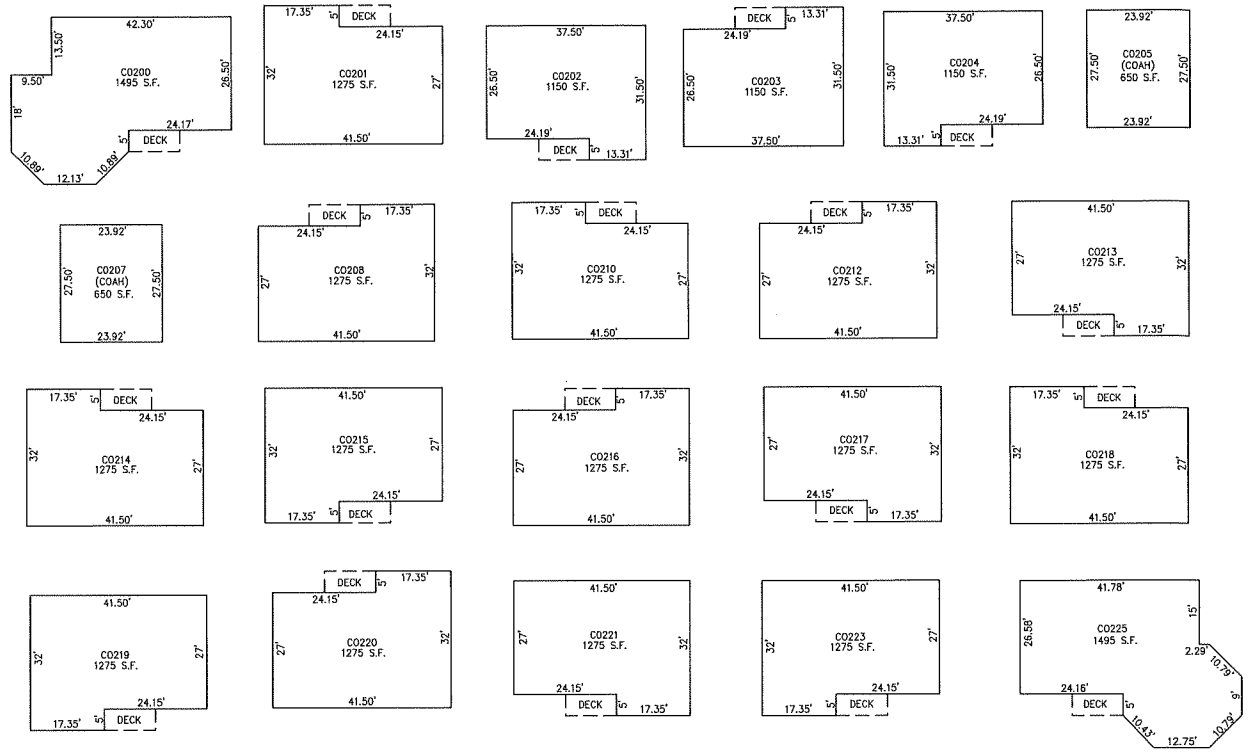
BLOCK 37, LOTS 9 & 10
KING'S RUN AT HADDON HEIGHTS CONDOMINIUM
GROUND FLOOR



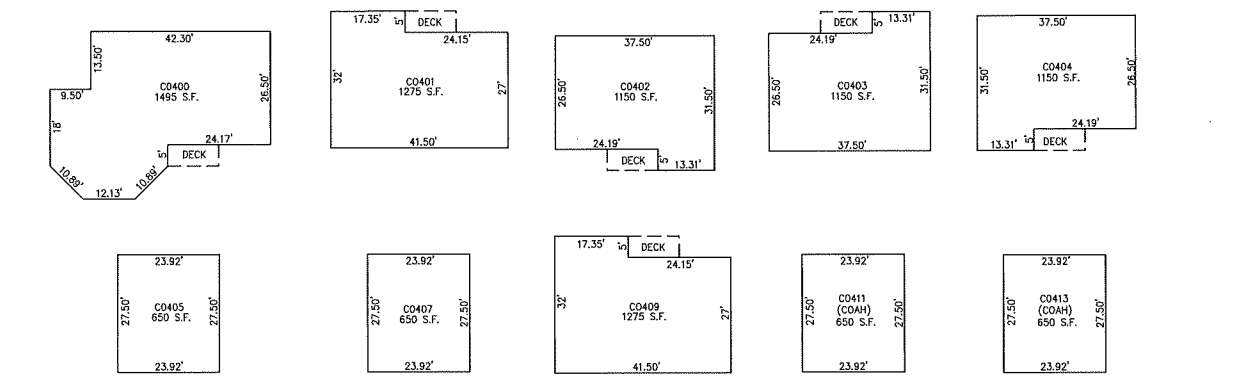
BLOCK 37, LOTS 9 & 10
KING'S RUN AT HADDON HEIGHTS CONDOMINIUM
SECOND FLOOR



BLOCK 37, LOTS 9 & 10
KING'S RUN AT HADDON HEIGHTS CONDOMINIUM
FIRST FLOOR



BLOCK 37, LOTS 9 & 10
KING'S RUN AT HADDON HEIGHTS CONDOMINIUM
THIRD FLOOR



REVISIONS		
12-31-2015	CHARLES E. ADAMSON	42827
12-31-2018	CHARLES E. ADAMSON	42827

NOTE:
THIS SHEET HAS BEEN DRAWN USING COMPUTER AIDED DRAFTING/DESIGN (CAD/D) AND COORDINATE GEOMETRY (COGO).

DETAILS
SCALE: 1"=20'

BLOCK 37, LOTS 9 & 10
KING'S RUN AT HADDON HEIGHTS
146 KINGS HIGHWAY
SEE PLATES 4, 4.01

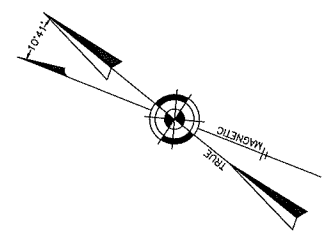
THIS TAX MAP PLATE HAS BEEN DIGITALLY DRAWN USING COMPUTER-AIDED DRAFTING/DESIGN (CAD/D) & COORDINATE GEOMETRY (COGO). IT IS BASED ON THE ORIGINAL DIGITALLY DRAWN TAX MAP PLATE BEARING THE OFFICIAL NEW JERSEY DIVISION TAXATION APPROVAL STAMP WITH APPROVAL DATE 06-01-2011 SERIAL NUMBER 968 AND SIGNATURES OF SIGNERS' THOMAS J. REILLY, CHIEF, LOCAL PROPERTY, FIELD ASSISTANCE; SUE DAVISON, SUPERVISING FIELD REPRESENTATIVE. THIS TAX MAP PLATE HAS BEEN DIGITALLY UPDATED TO REFLECT CURRENT CONDITIONS. THE ORIGINAL DIGITALLY DRAWN TAX MAP PLATE WITH THE OFFICIAL APPROVAL STAMP IS ON FILE WITH REMINGTON & VERNICK ENGINEERS.

TAX MAP
BOROUGH OF HADDON HEIGHTS
CAMDEN COUNTY NEW JERSEY

SCALE: NOTED DATE: 5-17-2010
CHARLES E. ADAMSON NJ PROFESSIONAL LAND SURVEYOR LIC. NO. 42827
REMINGTON & VERNICK ENGINEERS
24 GA 28003800
232 KING'S HIGHWAY EAST HADDONFIELD, N.J. 08033
(856) 795-9695, FAX (856) 795-1882
WEB SITE ADDRESS: WWW.RVE.COM
TO SHOW CONDITIONS AS OF 12-21-2021

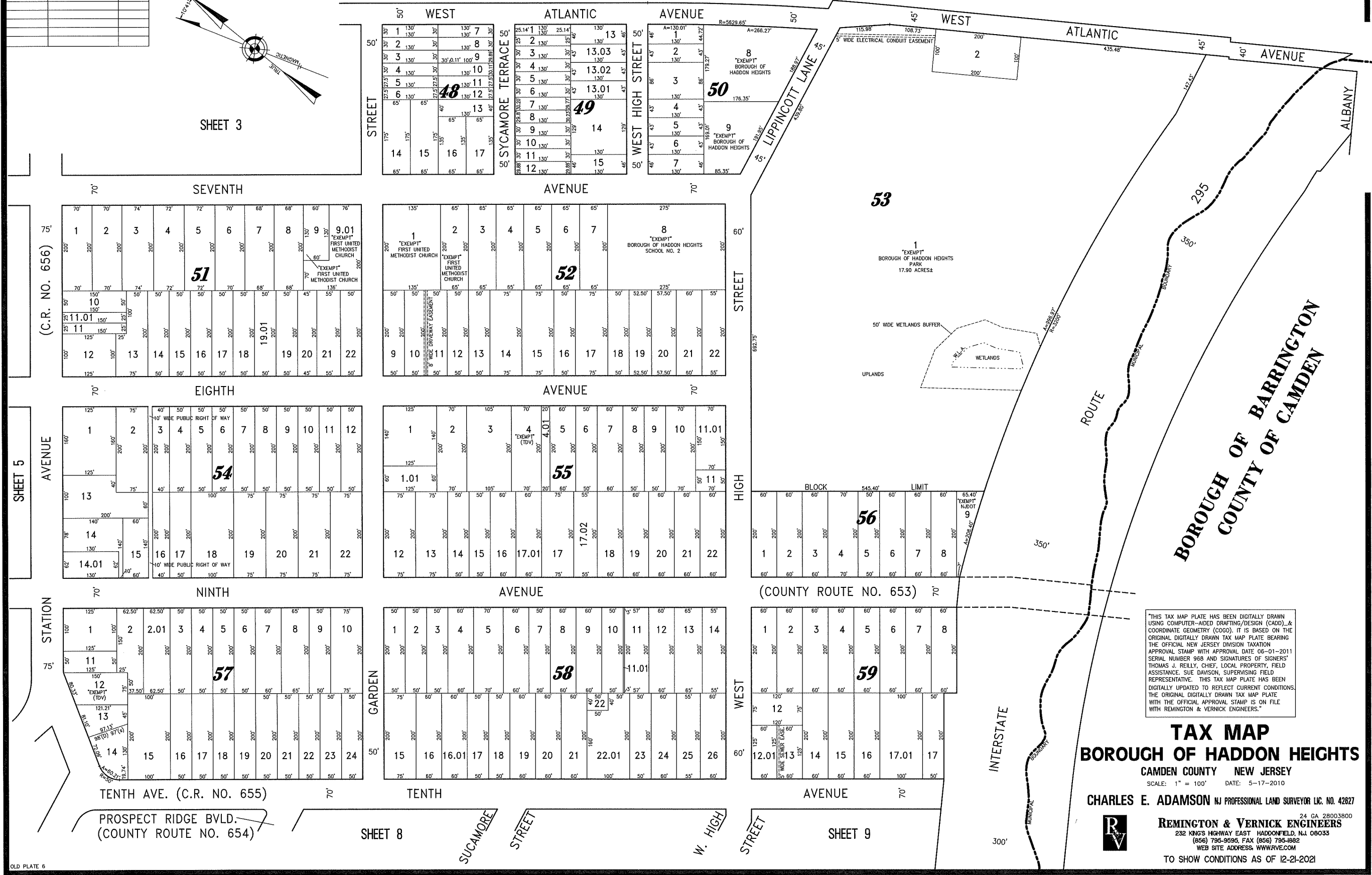
REVISIONS		
12-31-2016	CHARLES E. ADAMSON	42627
12-31-2017	CHARLES E. ADAMSON	42627
12-31-2019	CHARLES E. ADAMSON	42627

NOTE:
THIS SHEET HAS BEEN DRAWN USING COMPUTER AIDED DRAFTING/DESIGN (CAD/D) AND COORDINATE GEOMETRY (COGO).



SHEET 3

SHEET 4



(C.R. NO. 656)

SHEET 5

STATION

TENTH AVE. (C.R. NO. 655)
PROSPECT RIDGE BLVD.
(COUNTY ROUTE NO. 654)

SHEET 8

SUCAMORE STREET

STREET

W. HIGH STREET

SHEET 9

TAX MAP
BOROUGH OF HADDON HEIGHTS
CAMDEN COUNTY NEW JERSEY

SCALE: 1" = 100' DATE: 5-17-2010
CHARLES E. ADAMSON NJ PROFESSIONAL LAND SURVEYOR LIC. NO. 42827



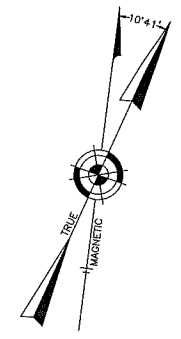
24 GA 28003800
REMINGTON & VERNICK ENGINEERS
232 KING'S HIGHWAY EAST HADDONFIELD, NJ 08033
(856) 795-9595, FAX (856) 795-1882
WEB SITE ADDRESS: WWW.RVE.COM

TO SHOW CONDITIONS AS OF 12-21-2021

REVISIONS		
12-31-2014	CHARLES E. ADAMSON	42627
12-31-2016	CHARLES E. ADAMSON	42627
12-31-2017	CHARLES E. ADAMSON	42627
12-31-2018	CHARLES E. ADAMSON	42627
12-21-2021	CHARLES E. ADAMSON	42627

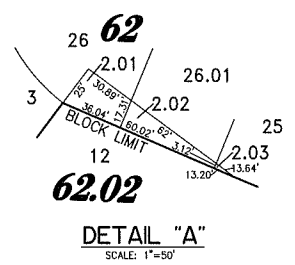
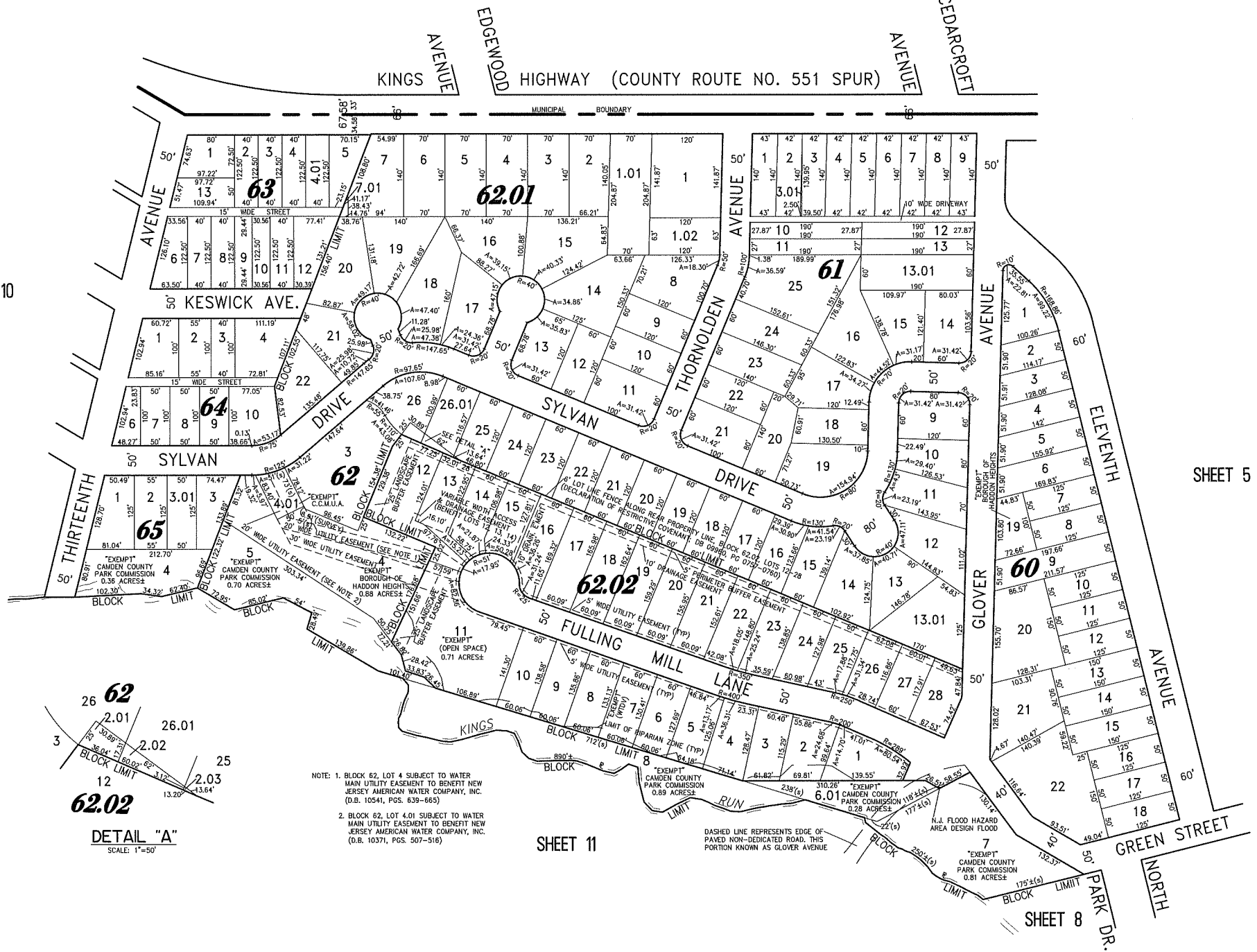
NOTE:
THIS SHEET HAS BEEN DRAWN USING COMPUTER AIDED DRAFTING/DESIGN (CADD) AND COORDINATE GEOMETRY (COGO).

**BOROUGH OF AUDUBON
COUNTY OF CAMDEN**



SHEET 10

SHEET 5



- NOTE: 1. BLOCK 62, LOT 4 SUBJECT TO WATER MAIN UTILITY EASEMENT TO BENEFIT NEW JERSEY AMERICAN WATER COMPANY, INC. (D.B. 10541, PGS. 639-665)
- 2. BLOCK 62, LOT 4.01 SUBJECT TO WATER MAIN UTILITY EASEMENT TO BENEFIT NEW JERSEY AMERICAN WATER COMPANY, INC. (D.B. 10371, PGS. 507-516)

SHEET 11

THIS TAX MAP PLATE HAS BEEN DIGITALLY DRAWN USING COMPUTER-AIDED DRAFTING/DESIGN (CADD) & COORDINATE GEOMETRY (COGO). IT IS BASED ON THE ORIGINAL DIGITALLY DRAWN TAX MAP PLATE BEARING THE OFFICIAL NEW JERSEY DIVISION TAXATION APPROVAL STAMP WITH APPROVAL DATE 06-01-2011 SERIAL NUMBER 968 AND SIGNATURES OF SIGNERS' THOMAS J. REILLY, CHIEF, LOCAL PROPERTY, FIELD ASSISTANCE; SUE DAVISON, SUPERVISING FIELD REPRESENTATIVE. THIS TAX MAP PLATE HAS BEEN DIGITALLY UPDATED TO REFLECT CURRENT CONDITIONS. THE ORIGINAL DIGITALLY DRAWN TAX MAP PLATE WITH THE OFFICIAL APPROVAL STAMP IS ON FILE WITH REMINGTON & VERNICK ENGINEERS.

**TAX MAP
BOROUGH OF HADDON HEIGHTS**

CAMDEN COUNTY NEW JERSEY
SCALE: 1" = 100' DATE: 5-17-2010

CHARLES E. ADAMSON NJ PROFESSIONAL LAND SURVEYOR LIC. NO. 42627

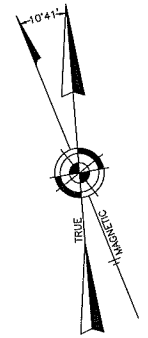


REMINGTON & VERNICK ENGINEERS
24 GA 28003800
232 KINGS HIGHWAY EAST HADDONFIELD, NJ 08033
(856) 795-8695, FAX (856) 795-1882
WEB SITE ADDRESS WWW.RVE.COM

TO SHOW CONDITIONS AS OF 12-21-2021

REVISIONS		
12-31-2016	CHARLES E. ADAMSON	42627
12-31-2017	CHARLES E. ADAMSON	42627
12-21-2021	CHARLES E. ADAMSON	42627

NOTE:
THIS SHEET HAS BEEN DRAWN USING COMPUTER AIDED DRAFTING/DESIGN (CADD) AND COORDINATE GEOMETRY (COGO).



TAX MAP

BOROUGH OF HADDON HEIGHTS

CAMDEN COUNTY NEW JERSEY
SCALE: 1" = 100' DATE: 5-17-2010

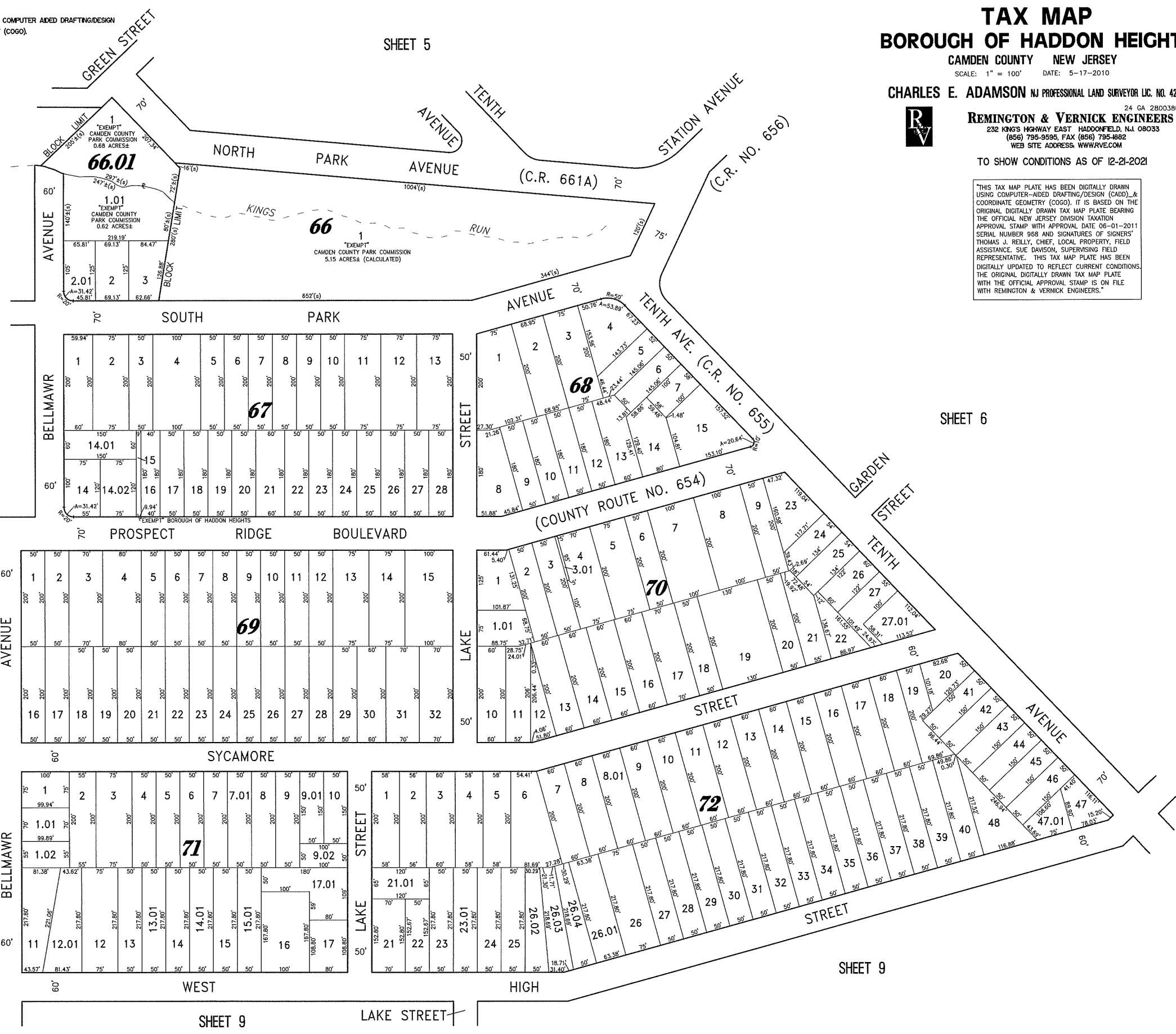
CHARLES E. ADAMSON NJ PROFESSIONAL LAND SURVEYOR LIC. NO. 42627



24 GA 28003800
REMINGTON & VERNICK ENGINEERS
232 KINGS HIGHWAY EAST HADDONFIELD, NJ 08033
(856) 795-9595, FAX (856) 795-4882
WEB SITE ADDRESS: WWW.RVE.COM

TO SHOW CONDITIONS AS OF 12-21-2021

THIS TAX MAP PLATE HAS BEEN DIGITALLY DRAWN USING COMPUTER-AIDED DRAFTING/DESIGN (CADD) & COORDINATE GEOMETRY (COGO). IT IS BASED ON THE ORIGINAL DIGITALLY DRAWN TAX MAP PLATE BEARING THE OFFICIAL NEW JERSEY DIVISION TAXATION APPROVAL STAMP WITH APPROVAL DATE 06-01-2011 SERIAL NUMBER 968 AND SIGNATURES OF SIGNERS THOMAS J. RELLY, CHIEF, LOCAL PROPERTY, FIELD ASSISTANCE, SUE DANSON, SUPERVISING FIELD REPRESENTATIVE. THIS TAX MAP PLATE HAS BEEN DIGITALLY UPDATED TO REFLECT CURRENT CONDITIONS. THE ORIGINAL DIGITALLY DRAWN TAX MAP PLATE WITH THE OFFICIAL APPROVAL STAMP IS ON FILE WITH REMINGTON & VERNICK ENGINEERS.



SHEET 5

SHEET 6

SHEET 11

SHEET 9

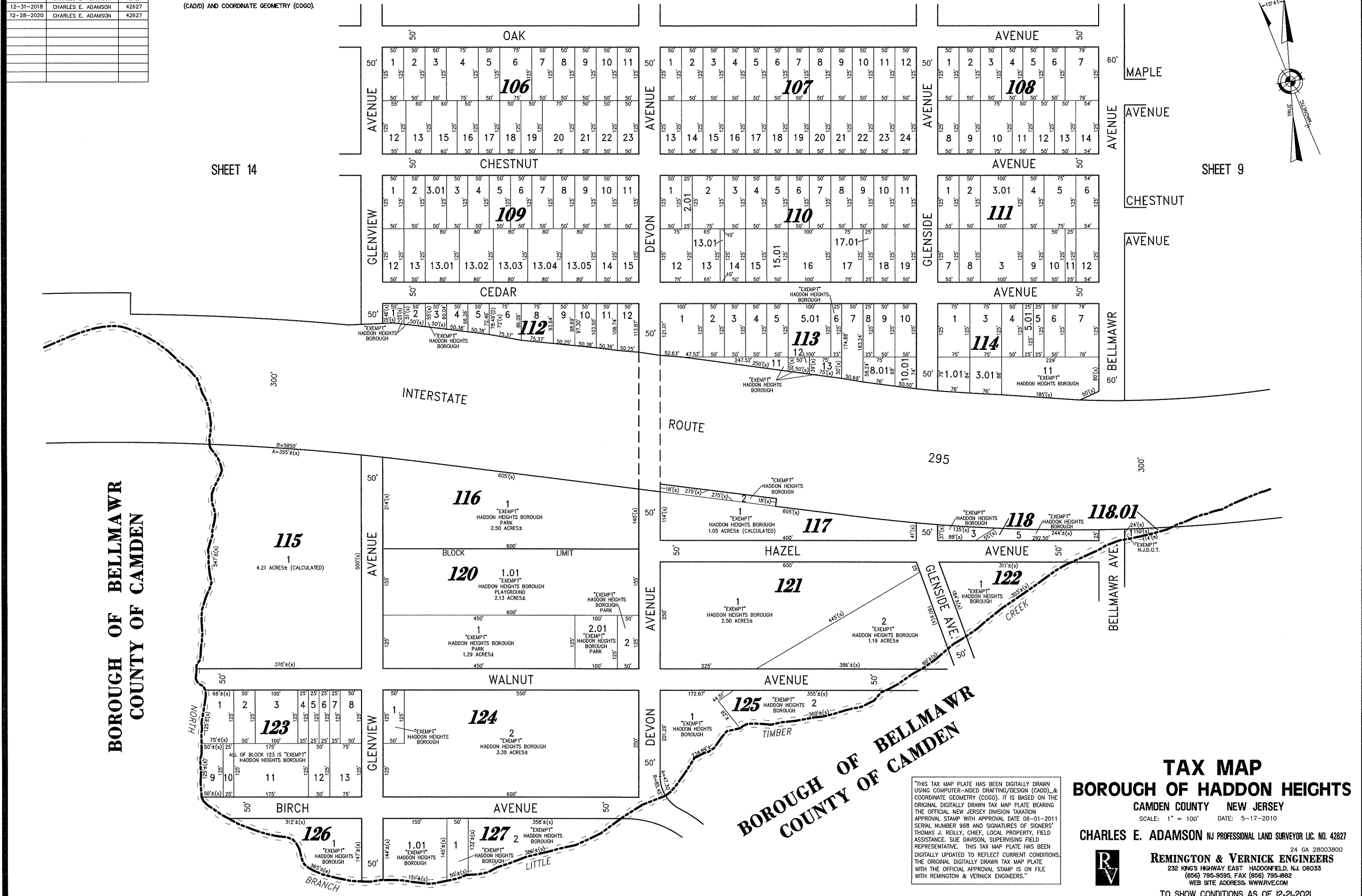
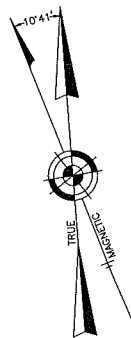
SHEET 9

LAKE STREET

REVISIONS		
12-31-2013	CHARLES E. ADAMSON	42627
12-31-2016	CHARLES E. ADAMSON	42627
12-31-2018	CHARLES E. ADAMSON	42627
12-28-2020	CHARLES E. ADAMSON	42627

NOTE:
THIS SHEET HAS BEEN DRAWN USING COMPUTER AIDED DRAFTING/DESIGN (CADD) AND COORDINATE GEOMETRY (COGO).

SHEET 11



BOROUGH OF BELLMAWR
COUNTY OF CAMDEN

BOROUGH OF BELLMAWR
COUNTY OF CAMDEN

TAX MAP
BOROUGH OF HADDON HEIGHTS
CAMDEN COUNTY NEW JERSEY
SCALE: 1" = 100' DATE: 5-17-2010

CHARLES E. ADAMSON NJ PROFESSIONAL LAND SURVEYOR LIC. NO. 42627



24 GA 28003800
REMINGTON & VERNICK ENGINEERS
232 KING'S HIGHWAY EAST HADDONFIELD, NJ 08033
(609) 796-9595, FAX (609) 795-1682
WEB SITE ADDRESS: WWW.RVE.COM

THIS TAX MAP PLATE HAS BEEN DIGITALLY DRAWN USING COMPUTER-AIDED DRAFTING/DESIGN (CADD) & COORDINATE GEOMETRY (COGO). IT IS BASED ON THE ORIGINAL DIGITALLY DRAWN TAX MAP PLATE BEARING THE OFFICIAL NEW JERSEY DIVISION TAXATION APPROVAL STAMP WITH APPROVAL DATE 06-01-2011 SERIAL NUMBER 968 AND SIGNATURES OF SIGNERS' THOMAS J. RELLY, CHIEF, LOCAL PROPERTY, FIELD ASSISTANCE, SUE DAVISON, SUPERVISING FIELD REPRESENTATIVE. THIS TAX MAP PLATE HAS BEEN DIGITALLY UPDATED TO REFLECT CURRENT CONDITIONS. THE ORIGINAL DIGITALLY DRAWN TAX MAP PLATE WITH THE OFFICIAL APPROVAL STAMP IS ON FILE WITH REMINGTON & VERNICK ENGINEERS."

TO SHOW CONDITIONS AS OF 12-21-2021

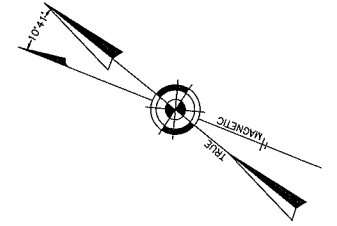
REVISIONS		
12-31-2015	CHARLES E. ADAMSON	42627
12-31-2018	CHARLES E. ADAMSON	42627
12-31-2019	CHARLES E. ADAMSON	42627
12-28-2020	CHARLES E. ADAMSON	42627
12-21-2021	CHARLES E. ADAMSON	42627

NOTE:

THIS SHEET HAS BEEN DRAWN USING COMPUTER AIDED DRAFTING/DESIGN (CADD) AND COORDINATE GEOMETRY (COGO).

BOROUGH OF MOUNT EPHRAIM
COUNTY OF CAMDEN

BOROUGH OF AUDUBON
COUNTY OF CAMDEN
KINGS HIGHWAY (COUNTY ROUTE NO. 551 SPUR)



BOROUGH OF MOUNT EPHRAIM
COUNTY OF CAMDEN

GLOUCESTER
AVENUE
BELL ROAD

(STATE ROUTE NO. 168)

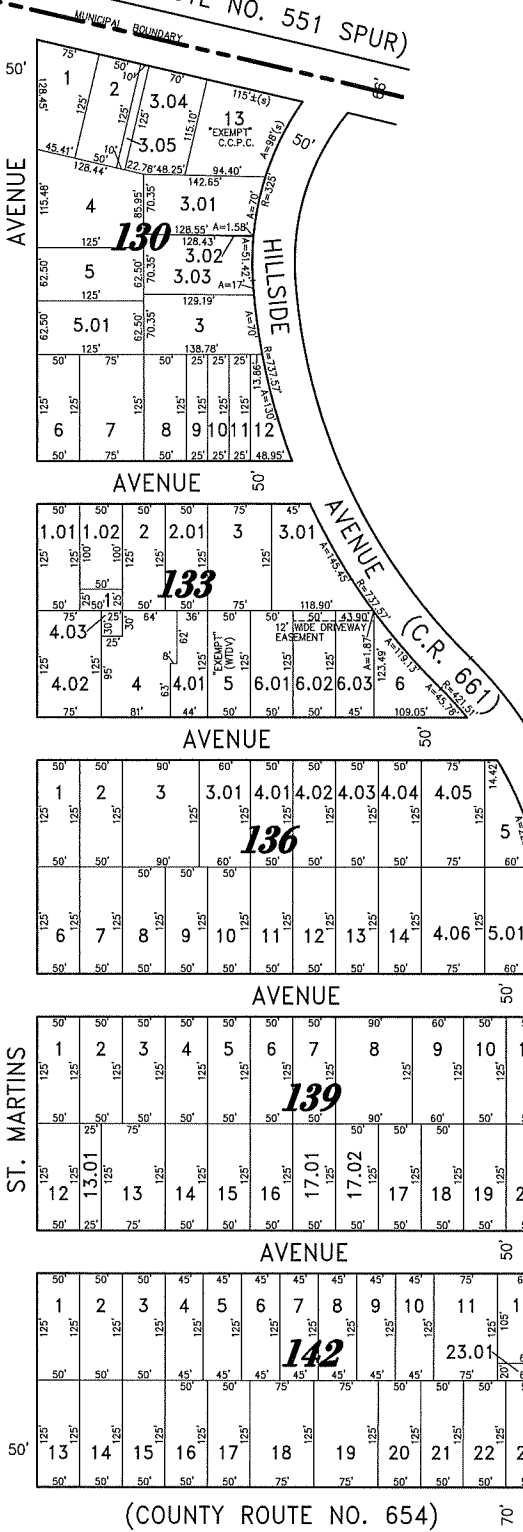
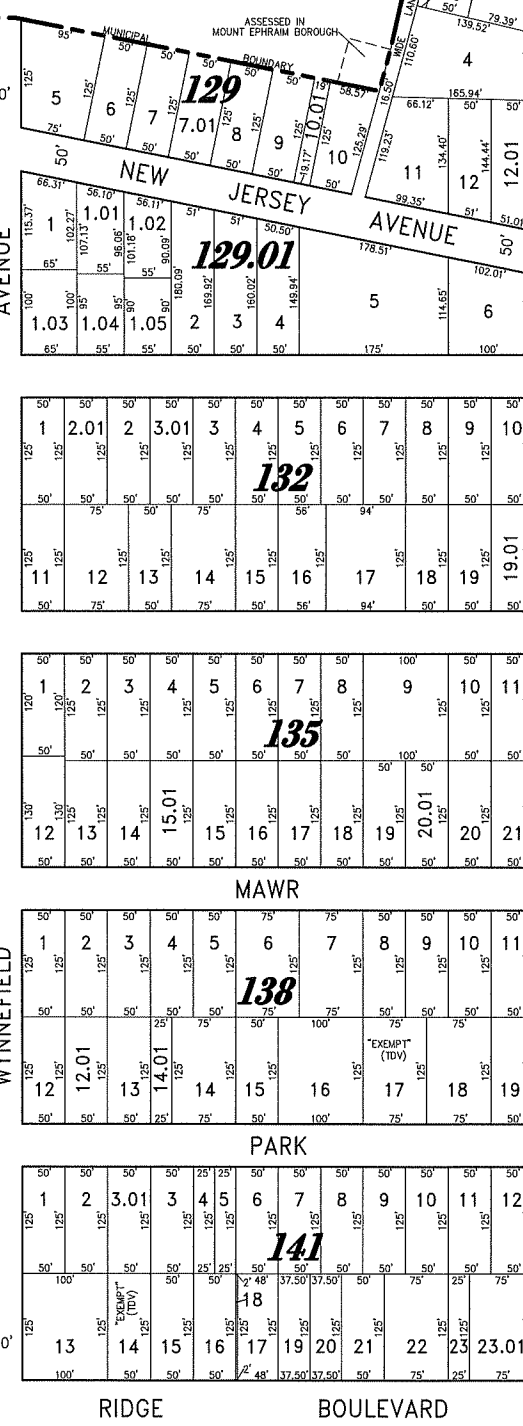
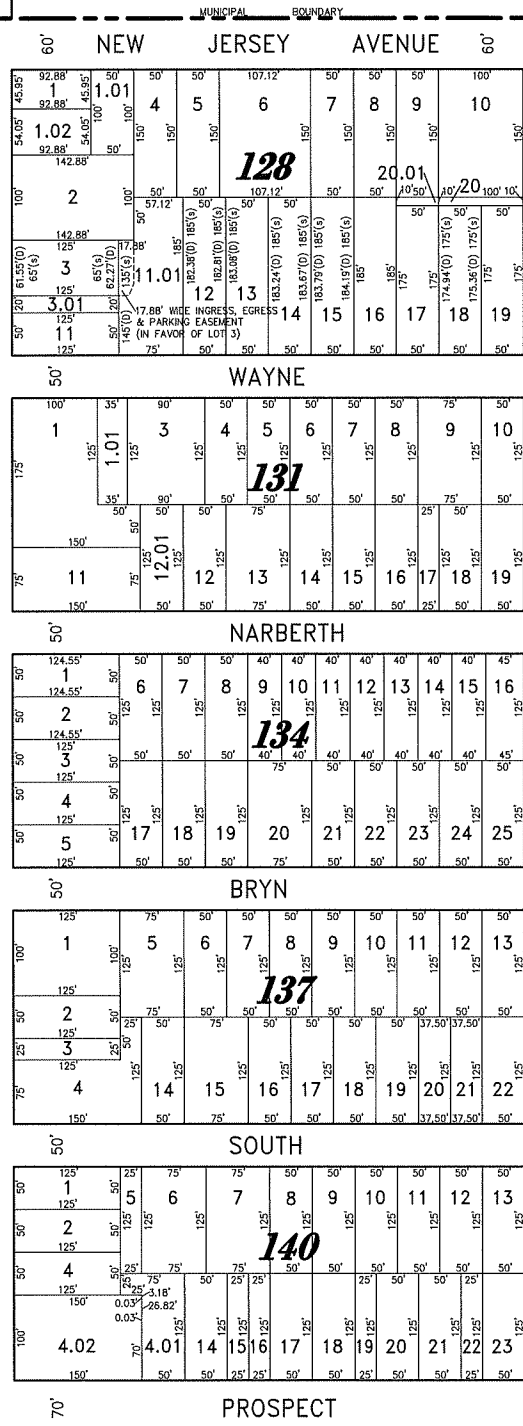
PIKE

WHITE

AVENUE

HORSE

BLACK



SHEET 10

THIS TAX MAP PLATE HAS BEEN DIGITALLY DRAWN USING COMPUTER-AIDED DRAFTING/DESIGN (CADD) & COORDINATE GEOMETRY (COGO). IT IS BASED ON THE ORIGINAL DIGITALLY DRAWN TAX MAP PLATE BEARING THE OFFICIAL NEW JERSEY DIVISION TAXATION APPROVAL STAMP WITH APPROVAL DATE 06-01-2011 SERIAL NUMBER 968 AND SIGNATURES OF SIGNERS THOMAS J. REILLY, CHIEF, LOCAL PROPERTY, FIELD ASSISTANCE, SUE DAVISON, SUPERVISING FIELD REPRESENTATIVE. THIS TAX MAP PLATE HAS BEEN DIGITALLY UPDATED TO REFLECT CURRENT CONDITIONS THE ORIGINAL DIGITALLY DRAWN TAX MAP PLATE WITH THE OFFICIAL APPROVAL STAMP IS ON FILE WITH REMINGTON & VERNICK ENGINEERS.

TAX MAP
BOROUGH OF HADDON HEIGHTS
CAMDEN COUNTY NEW JERSEY

SCALE: 1" = 100' DATE: 5-17-2010
CHARLES E. ADAMSON NJ PROFESSIONAL LAND SURVEYOR LIC. NO. 42627



TO SHOW CONDITIONS AS OF 12-21-2021

SHEET 14

OLD PLATE 14

